

General Barcode Printing Setup for Version 7 Polling

These are basic instructions for Version 7 Polling barcode printing. Users will need to have a PLU/UPC file containing either UPC-A, UPC-E, EAN 13 or EAN 8 numbers, label (barcode) sheets, and a printer installed on the computer that is capable of printing the barcodes. All V7 registers support barcode printing, except the Sharp 410/420 1A ROM and that limitation is based upon the register.

Begin by opening V7 Polling. Then enter the Maintain area and select the PLU/UPC program.

PC Poll V7

File Tools Help

Print Barcodes
Mass Update
Mass Create
Verify

Communications

Maintain

Negative #

PLU/UPC

PLU Menu

PLU Sale

PLU/UPC Template

Positive #

Scale Table

Server

Setup

Preferences

Reports

Most Recent

Sharp 700 PLU/UPC Record 75 of 75

Polling Page 1 | Polling Page 2

PLU Code: 41508800129

Type: UPC A

Sign: Positive (+)

Department: Seafood

CP Object: 0

Entry Type: Preset

Price Shift: Enabled

Menu Type: Normal

Link Table: ...

Mix Match Tbl: ...

Tare Table: ...

Priority Grp: 0

Class 1: ...

Class 2: ...

Class 3: ...

Level	Description	Price	KP Text	Allow Zero
Level 1	Bottled Water	\$2.25		Yes
Level 2		\$0.00		No
Level 3		\$0.00		No
Level 4		\$0.00		No
Level 5		\$0.00		No
Level 6		\$0.00		No

Search: _____

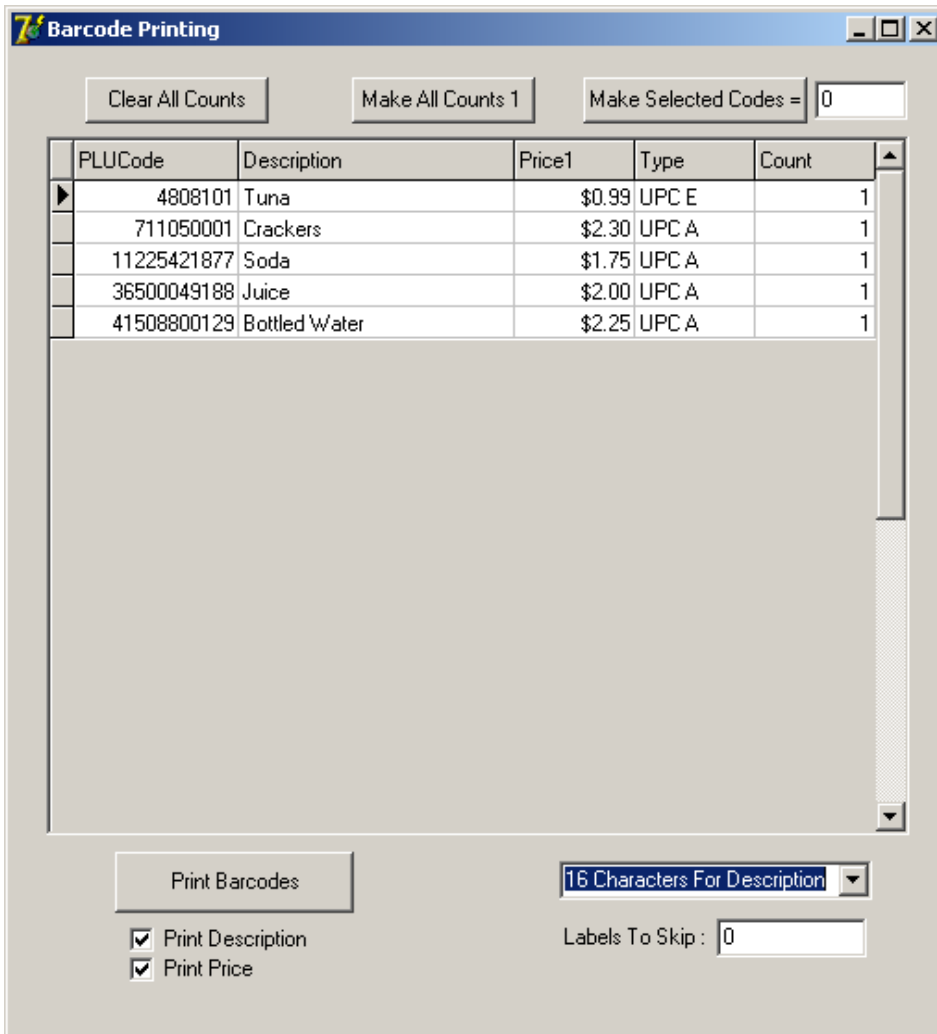
PLU Code	Type	Plu Index	Description	Price1	Dept Number	Entry Type	Repe
480810		4	43 Tuna	\$0.99	2	2	2
711050001		3	41 Crackers	\$2.30	2	2	2
1225421877		3	39 Soda	\$1.75	2	2	2
6500049188		3	40 Juice	\$2.00	2	2	2
1508800129		3	38 Bottled Water	\$2.25	2	2	2

Machine ID: Sharp700 Program ID: Sharp700

Close Exit Help

Within the PLU/UPC grid use the ctrl and shift key on the keyboard to select the desired items. To select all items, highlight the 1st item on the grid, hold down the shift key, scroll down to the bottom of the file and select the last item. Alternatively, click on 1 record within the grid, hold down the ctrl key and click on the letter A. Only the records highlighted in blue will be transferred to the barcode program.

Now click the Print Barcodes option found within the Tools menu. The barcode program window will now appear.



Barcode Screen Options

Clear All Counts

Resets all numbers in the Count column to zero.

Make All Counts 1

Sets all UPC numbers in the Count column to 1. If the item is of type PLU, the count will remain 0.

Make Selected Codes=

This option will set all selected UPC codes to the entered value. Use the ctrl and shift keys to select items. If the item is of type PLU, the count will remain 0.

Print Barcodes

Displays the label size selection screen for printing the barcodes.

Print Description

Checking this option will include the item description on the label. Unchecking the option will print the label without a description.

Print Price

Checking this option will include the item price on the label. Unchecking the option will print the label without a price.

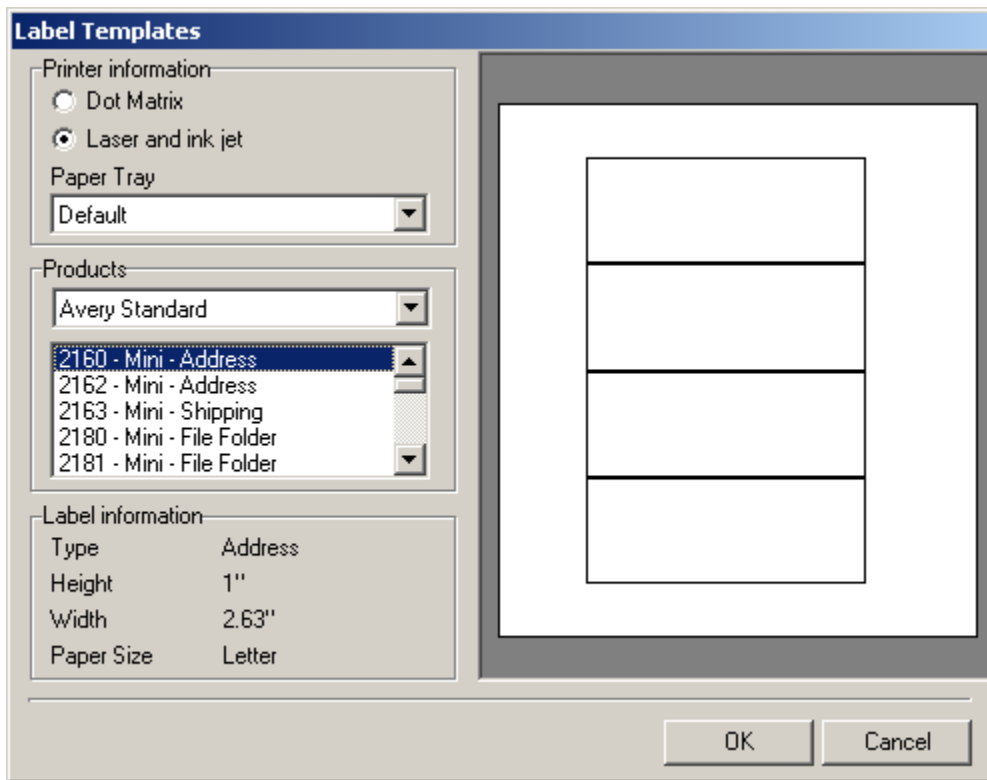
8 Characters for Description

16 Characters for Description Users can choose if they want 8 or 16 characters, of the description, to print on the label.

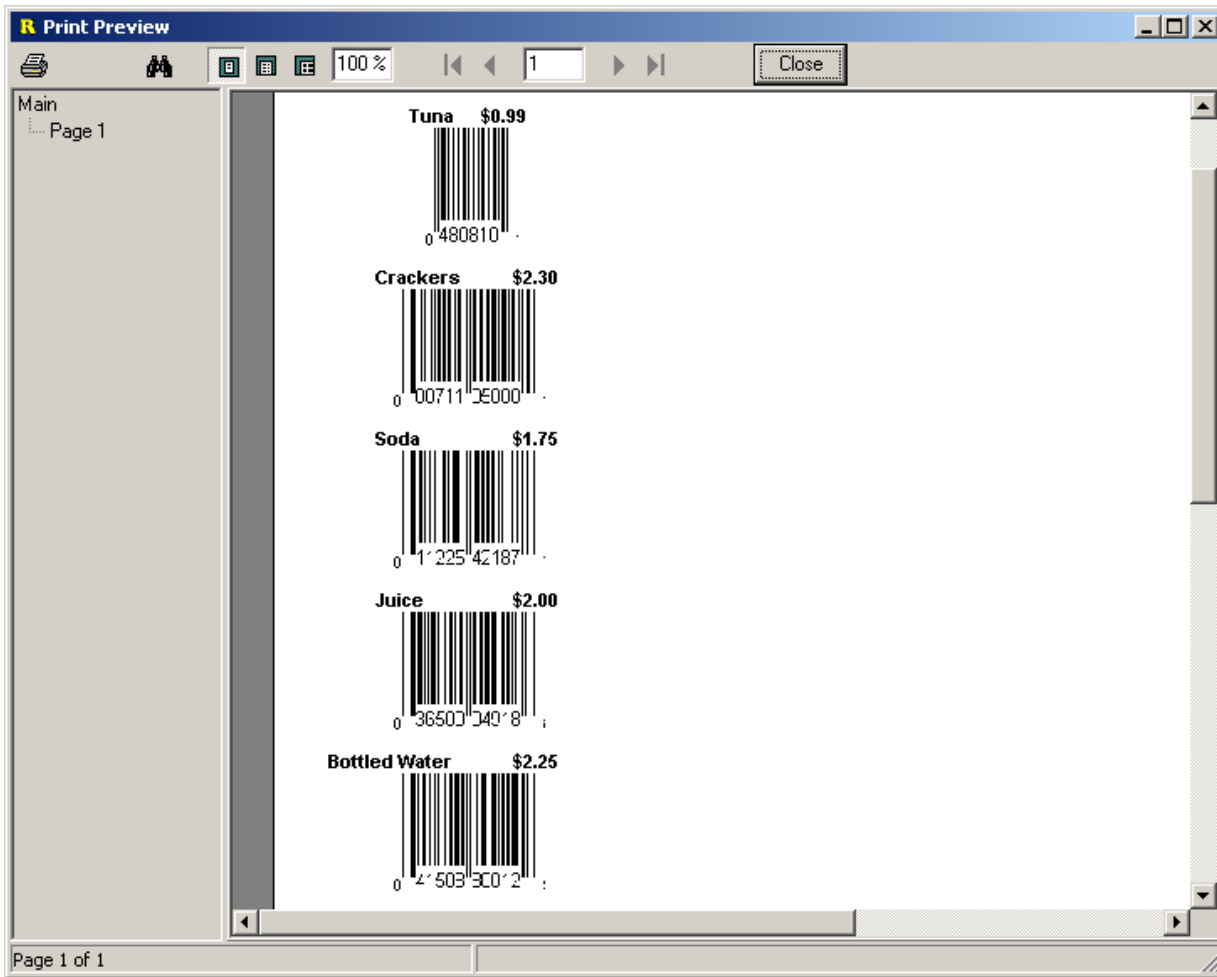
Labels To Skip

This option lets users reuse label sheets. The labels start in the upper-left corner and fill in the barcodes one column at a time. If some of the 1st labels have already been used, simply count the number to skip and enter it into the software.

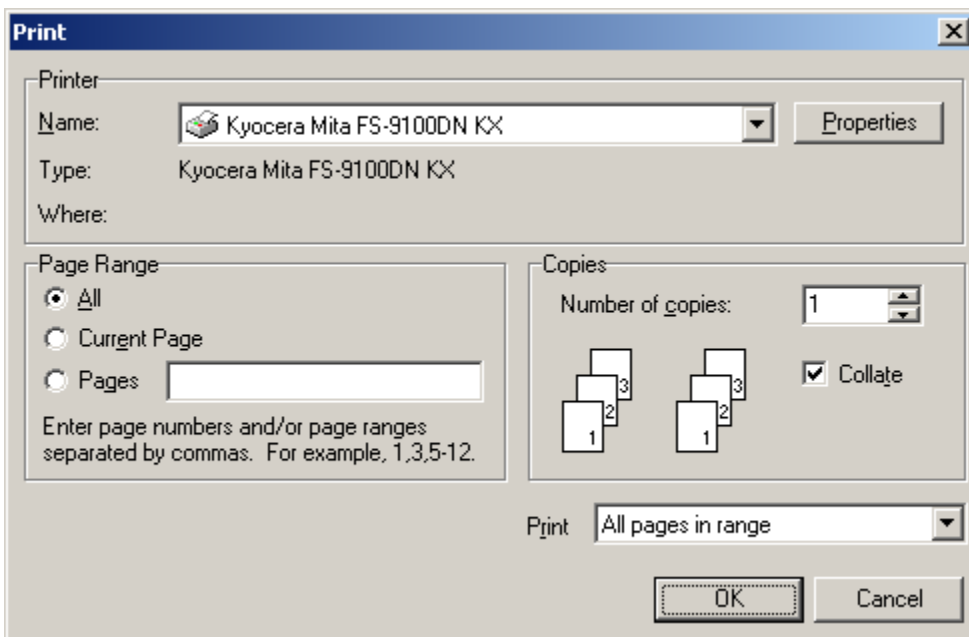
After you have made your selections, simply click the Print Barcodes button. Make sure to enter a count of 1 on at least one item.



Select the desired label size. A preview of the label sheet to appear to the right. After making a selection, click OK.



A preview of the labels will appear. Click the Printer icon in the upper-left corner to print the labels.



Labels can be printed on label sheets with a standard computer printer or with a label printer. The printer must be installed on the PC and the user will simply need to locate the appropriate label size on the Label Templates screen.

Any questions or comments can be emailed to support@pcpoll.com.