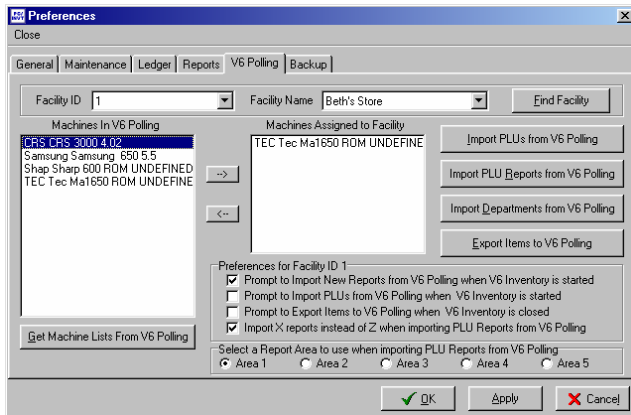
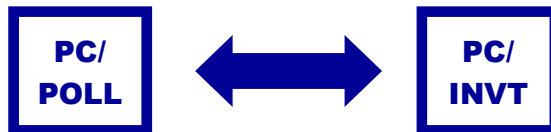


Preferences Area

- Switch between LIFO, FIFO and Weighted Average costing methods on demand
- View inventory totals in LIFO, FIFO, and Weighted Average
- Options to manipulate printing, exporting and importing
- Select Ledger Area viewing options
- Customize Report Area options
- Assign Version 6 Polling machines to Inventory facilities
- Setup Polling and Inventory connectivity
- Execute an immediate backup or restore from an archived file
- Preferences to automate transfer of items from Polling, reports from Polling, and items from Inventory back to Polling
- Option to manually import departments from Polling
- Ability to select which area and type of Poll will be imported into Inventory from Polling
- A single Inventory module can connect to all four Polling packages (CRS, Sam4s, Sharp, TEC)



Preferences Area:
This area allows you to select preferences to automate the transfer of information from Polling, assign registers to facilities and customize Inventory for your use.



Download a DEMO from the web today!

Archive Agent



DenView500



Inventory



PC/Capture



V6 Polling



QuickBooks



V7 Polling &
Inventory



Interface

www.pcpoll.com

DenView500

Is an ingredient view of sales that bridges the gap between polling and a full-blown inventory system

General Features:

- Allows users to take previously collected polling reports and calculate the usage on assembled items
- Allows business owners to manage their businesses at a fraction of the cost of a high-end inventory module
- Basic stock tracking also included
- Can be applied to many kinds of stores including restaurants and bars

PC/POLL SYSTEMS
3162 Cedar Crest Ridge
Dubuque, IA 52003

Phone: (563) 556-2323
Fax: (563) 556-0405
Email: sales2007@pcpoll.com

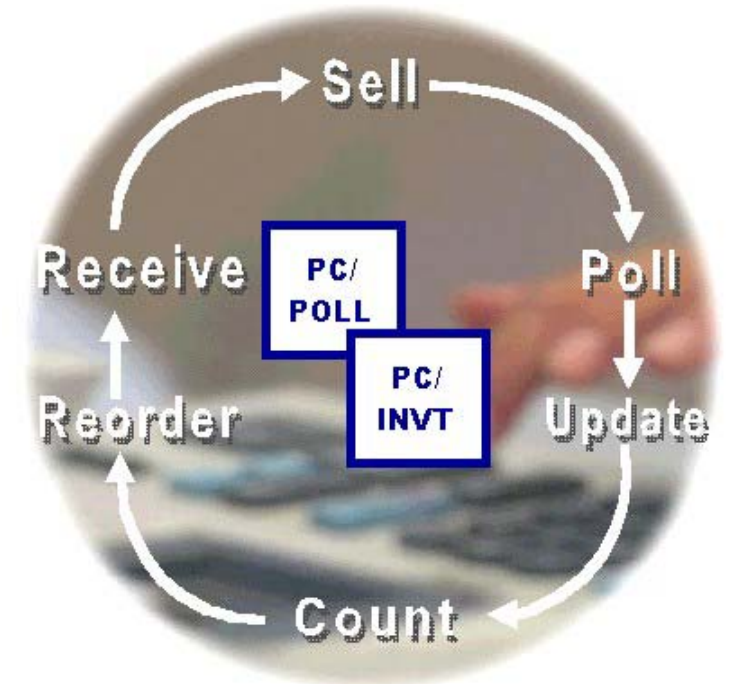
OVER 22 YEARS OF SERVICE
FOUNDED IN 1984



PC/POLL SYSTEMS

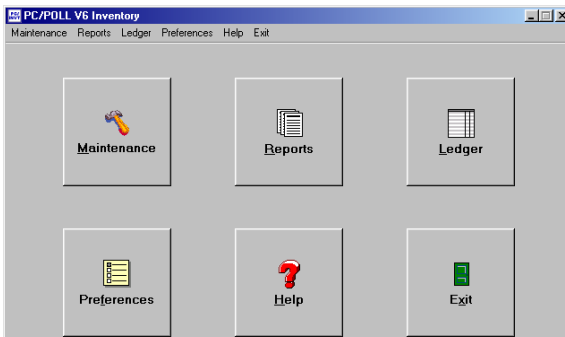
Point of Sale Communications Software

Version 6 Inventory



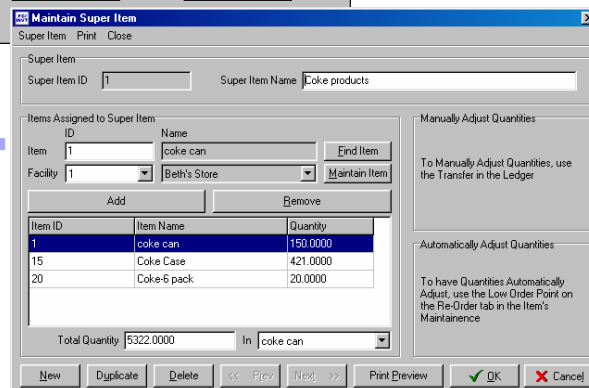
Features of Version 6 Inventory

- Update inventory counters by retrieving report data from Version 6 Polling or use Inventory as a stand alone module to track the sale of hard goods
- Grid displays to help users quickly view data
- Customizable print, export and import options
- Support for Single, Six Pack and Case
- Modify PLU (Price Look Up) prices in either Polling or Inventory and the other package can easily be updated
- Track PLU stock levels and sales data
- View a complete PLU history including sales, transfers, adjusted items, received items, and physical inventory
- Create Purchase Orders
- Set low point re-order triggers
- Collect important report data quickly on item and purchase order status
- Prompting preference to help automate transfers
- Tracking of single, six-pack and case or pack and carton using the super item feature



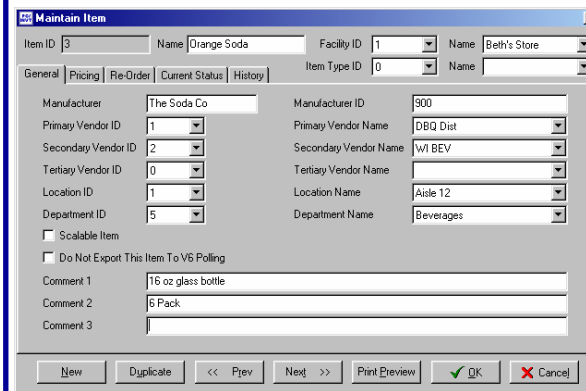
Main Screen:
This is the main menu screen. From here users can enter the different areas of the program.

Super Item Detail:
This is the detail screen of the Super Item feature. This allows you to link items like single, six-pack and case together.



Maintenance Area

- Add, duplicate, delete and maintain Facilities, Vendors, Locations, Items, Item Types, Departments and Super Items
- Set Items to dead or inactive status
- Print only desired fields and ranges of data
- View the entire list of entries or filter the view to only contain records that match the selected criteria
- Customize import and export options to allow for interfacing capability with other software packages
- Duplicate an entire facility's Item list with a few simple clicks
- Tracking of single, six-pack and case or pack and carton using the super item feature
- Link Items to an Item Type for rapid creation and maintenance of Items



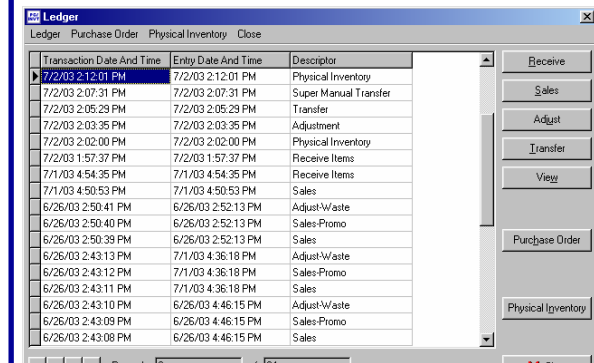
Item Area:
This area allows you to maintain information about each item.

Report Area

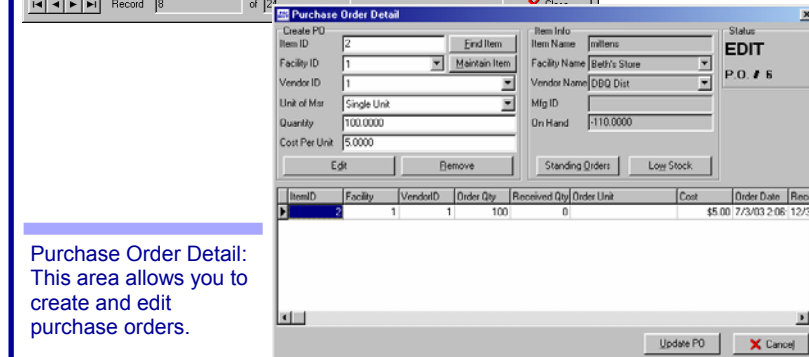
- Generate reports based off of Item, Purchase Orders and Ledger Inventory information
- Reports available include:
 - Top Usage
 - On Hand
 - Item Short
 - Zero Sellers
 - Pending POs
 - Sales Report
 - Item by Department
 - Plus Many More

Ledger Area

- Receive, Sell, Adjust and Transfer all Inventory items
- Transfer items between facilities or within a super item set
- Print Physical Inventory report sheets for office use
- Adjust item quantities based off of Physical Inventory reports
- Import scanner files into Physical Inventory Area for easy updating of inventory counts
- Generate, modify, print and receive Purchase Orders along with updating inventory totals
- View All Open, All Received, All Pending, All Deleted or All Purchase Orders through an easy-to-read grid
- Create Purchase Orders from low stock and standing reorder points
- Change date of transactions on ledger, allowing you to post date transactions



Ledger Area:
This area allows you to receive, sell, adjust, and transfer your inventory. You can also create purchase orders and update physical inventory.



Purchase Order Detail:
This area allows you to create and edit purchase orders.