

FEATURES OF V7 INTERFACES

ARCHIVE AGENT

- Archives PC/POLL SYSTEMS Polling, Inventory, and QuickBooks Interface V3 data for all V7 registers. It is a complete backup for all Version 7 products.
- Allows users to Archive, Restore, and Delete files from their polling directories.
- Polling, archive, and restore options are divided into sections such as archiving just the setup files or just the report files.
- Data is compressed and stored in Zip files.
- Software displays messages for successful and unsuccessful actions.
- All options process quickly and are easy to execute.
- This program can be used to backup software data and to recover lost data.
- Corporate polling features include automatic emailing options, FTP, and data file merge.
- FTP transferring routines are also included.

DENVIEW500

- DenView500 is a product that helps bridge the gap between Polling and a full-blown inventory system.
- DenView500 allows users to take previously collected Version 7 PLU reports and calculate the usage on assembled items.
- DenView500 works with all Version 7 cash registers. This program gives users an ingredient view of item sales data.
- DenView500 can be applied to many different types of stores including restaurants and bars.
- This software will allow the user to create a Master Items list of all their PLU items and link up to 5 component items to each of these Master items. The component items are then attached to Raw Purchasing Units. The reports generated reflect the total usage of the Raw Purchasing Units.
- Users can also track on hand values.

VERSION 7 POLLING

Version 7 Polling includes an outlook bar style design that makes navigating the software a snap. Users can easily jump between register Communications and Maintain with just a few mouse clicks. **Version 7 Polling** contains many enhanced features including:

- Communications:** Checkbox style communication selections allow the user to quickly multi-select programs to save, to send or reports to poll
- Maintain:** Mass creating, editing and deleting routines simplify register maintenance
- Setup:** Create Scripts, Schedules and setup the Calendar for automatic polling options
- Preferences:** User defined classes allow for quick sorting and searching options, along with optional software settings
- Reports:** The AllPolls grid stores previously taken reports for later printing, viewing, and exporting. Users can also easily generate graphs based upon report data
- Most Recent:** Quickly revisit recently used maintenance area programs



PC/POLL SYSTEMS

3162 Cedar Crest Ridge
Dubuque, Iowa 52003
Phone: 563-556-2323
Fax: 563-556-0405

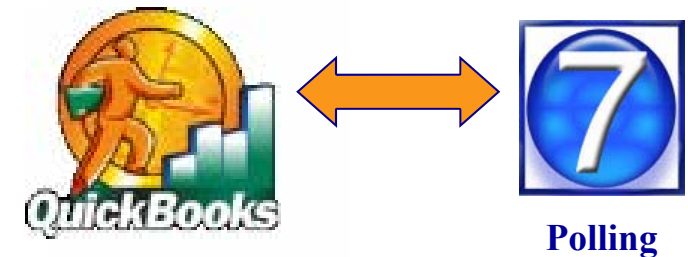
Email: sales2007@pcpoll.com
Web: www.pcpoll.com

PC/POLL SYSTEMS

Point of Sale Communications Software

QUICKBOOKS INTERFACE V3

**Transfers data into QuickBooks
from all supported registers in
Version 7 Polling with a few simple
clicks!**



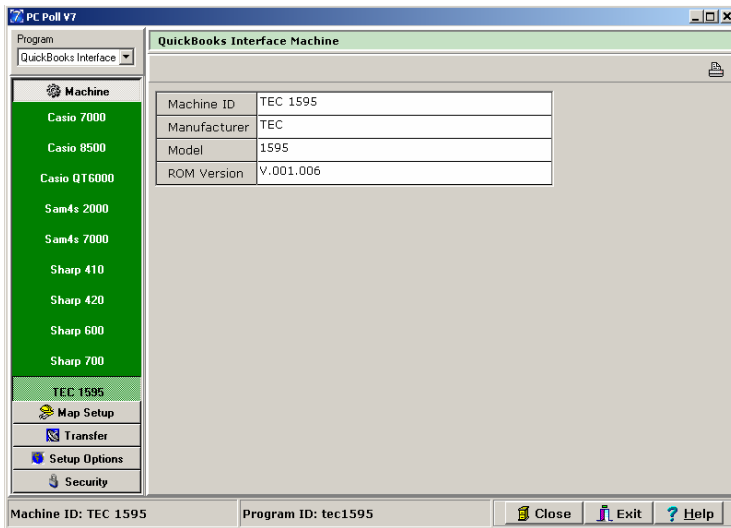
OTHER PC/POLL SYSTEMS PRODUCTS

**ARCHIVE AGENT
DENVIEW500
V7 INVENTORY
V7 POLLING**

FEATURES OF QUICKBOOKS VERSION 3

- Transfers data into QuickBooks from all supported registers in Version 7 Polling with a few simple clicks
- Interfaces with QuickBooks 2000—2007 and Standard, Pro and Premier versions.
- Optional password protection for security.
- Auto transfer routine for most configurations
- All files are transferred in and out of QuickBooks in IIF format
- Use any or all of the following reports from Version 7 Polling to transfer data into QuickBooks:
 - PLU/UPC/Scan PLU
 - Check Track / Customer
 - Time Keeping
 - Transaction/Financial
 - Department/Group

Some reports not available on all registers



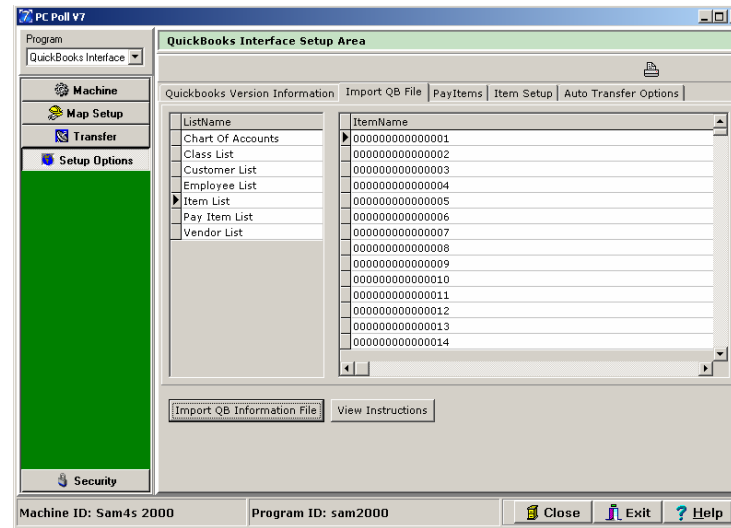
All Version 7 Polling machines are supported within the QuickBooks Interface.

SECURITY AREA

- Enter release code to activate the program and view release code information
- Set up and change program password, giving the user control of who can access the software

INITIAL SETUP AREA

This is the setup area of the QuickBooks Interface. This data was imported from QuickBooks.

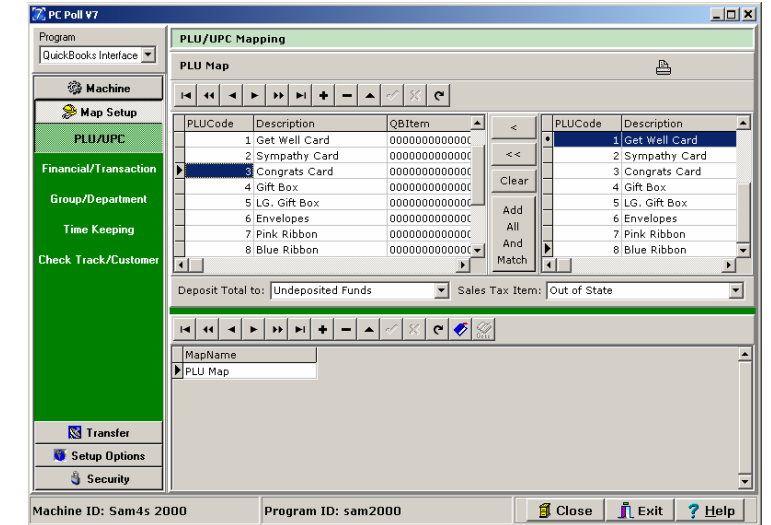


MAP SETUP AREA

- Easily map items from Version 7 Polling reports to QuickBooks chart of accounts and items list
- Easy-to-use detail screens to manipulate data to fit your specific needs
- Ability to map multiple machines from different manufacturers

MAP SETUP AREA CONTINUED

This area allows you to match information from Polling to QuickBooks information. This is an example of a PLU/UPC/Scan PLU



Use any or all of the following reports from Version 7 to transfer data into QuickBooks:

- PLU Report—link QuickBooks Items to V7 Polling PLUs
- Timekeeping—bring the timekeeping report into QuickBooks to generate payroll
- Department/Group—link QuickBooks Classes to V7 Polling Departments/Group to help keep track of sales
- Check Track / Customer—transfer over customer amounts and create statement charges within QuickBooks
- Transaction/Financial—bring the Transaction/Financial data into QuickBooks to help manage your chart of accounts