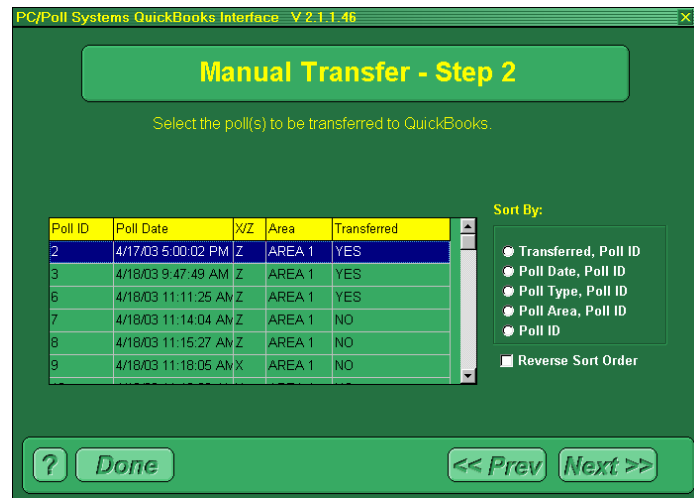


Options Setup Area

- Setup Area allows you automate transfers of Polling data
- Automatic transfers can be done with a single mouse click and work for most configurations
- Users can select what type, area and file name of Polls to be transferred

Transfer Area



The transfer area allows users to set up automatic or manual transfer of data.

- View a list of transferable polls
- Select the exact poll and type to be transferred
- Select the location for the poll to be transferred to
- Easily select from different maps to transfer

Download a DEMO from the web today!

Archive Agent



Inventory



V6 Polling



V7 Polling &
Inventory



DenView500



PC/Capture



QuickBooks



Interface

www.pcpoll.com

DenView500

Is an ingredient view of sales that bridges the gap between polling and a full-blown inventory system

General Features:

- ◆ Allows users to take previously collected polling reports and calculate the usage on assembled items
- ◆ Allows business owners to manage their businesses at a fraction of the cost of a high-end inventory module
- ◆ Basic stock tracking also included
- ◆ Can be applied to many kinds of stores including restaurants and bars

PC/POLL SYSTEMS

3162 Cedar Crest Ridge
Dubuque, IA 52003

Phone: (563) 556-2323

Fax: (563) 556-0405

Email: sales2007@pcpoll.com

OVER 22 YEARS OF SERVICE
FOUNDED IN 1984



PC/POLL SYSTEMS

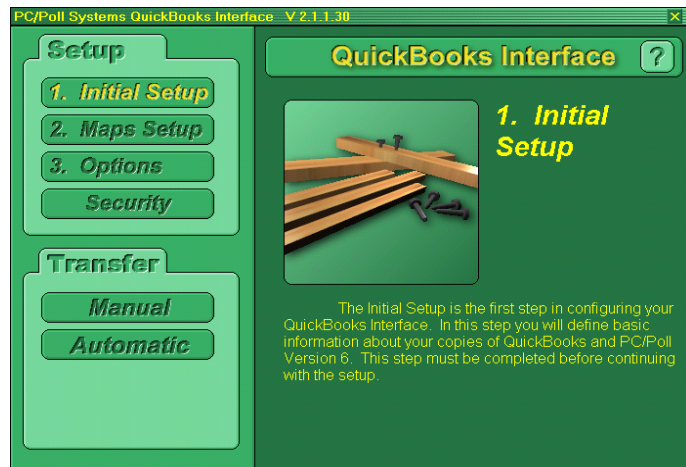
Point of Sale Communications Software

QuickBooks Interface Version 2



Features of QuickBooks Interface V2

- Completely revamped interface and routines
- Transfers data into QuickBooks from all supported registers in Version 6 Polling with a few simple clicks
- Interfaces with QuickBooks 5, 6, 99, 2000—2007 and Standard, Pro and Premier versions
- Help files detailing every screen
- Instructional Wizards to guide users through setup and daily maintenance
- Optional password protection for security
- Built-in log tracking for additional security and troubleshooting assistance
- Auto transfer routine for most configurations
- All files are transferred in and out of QuickBooks in IIF format
- Use any or all of the following reports from Version 6 Polling to transfer data into QuickBooks:
 - PLU
 - Time Keeping
 - Department/Group
 - Transaction/Financial



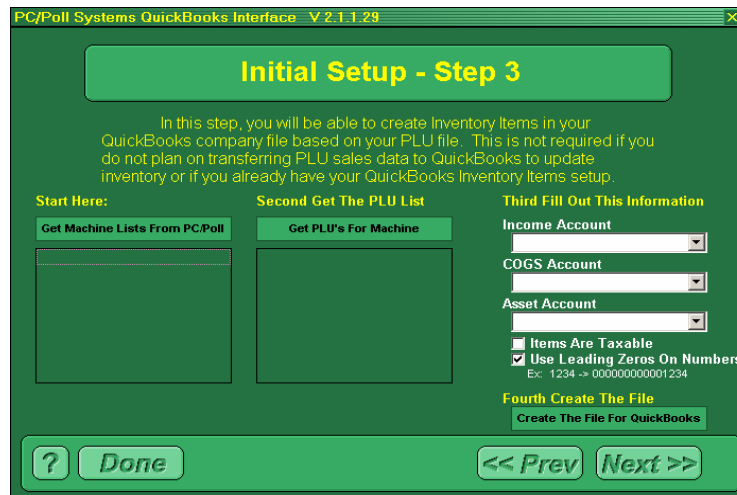
The QuickBooks Interface has instructional wizards to guide users through setup, making it easy to transfer information from V6 Polling.

Security Area

- Enter release code to activate the program and view release code information
- Set up and change program password, giving the user control of who can access the software

Initial Setup Area

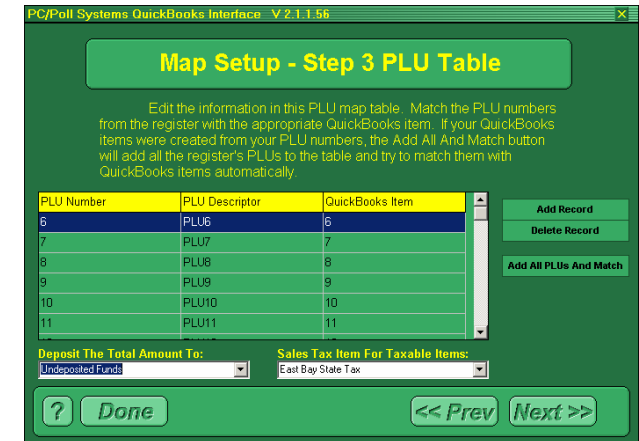
- Create a QuickBooks item list from a V6 Polling PLU file
- Automatic find function to locate installed versions of Version 6 Polling
- Easily import information directly from QuickBooks with a few mouse clicks
- Ability to enter and maintain payroll items
- Able to select version of QuickBooks and Polling to match your system



This area allows you to create a QuickBooks Item file from a V6 Polling PLU file.

Map Setup Area

- Easily map items from Version 6 Polling reports to QuickBooks chart of accounts and items list
- Easy-to-use detail screens to manipulate data to fit your specific needs
- Ability to map multiple machines from different manufacturers



This area allows you to match information from Polling to QuickBooks information.

Use any or all of the following reports from Version 6 to transfer data into QuickBooks:

- PLU Report—link QuickBooks Items to V6 Polling PLUs
- Timekeeping—bring the timekeeping report into QuickBooks to generate payroll
- Department/Group—link QuickBooks Classes to V6 Polling Departments/Group to help keep track of sales
- Transaction/Financial—bring the Transaction/Financial data into QuickBooks to help manage your chart of accounts