

QuickBooks Interface Version 2

- Completely revamped interface and routines
- Transfers data from all supported registers in Version 6 Polling with a few simple clicks
- Interfaces with QuickBooks 5, 6, 99, 2000 - 2007, and Standard, Pro and Premier versions
- Help files detailing every screen
- Instructional Wizards to guide users through setup and daily maintenance
- Optional password protection for security
- Built-in log tracking for additional security and troubleshooting assistance
- Auto transfer routine for most configurations



Features of Version 6 Inventory

- Update inventory counters by retrieving report data from Version 6 Polling or use Inventory as a stand alone module to track the sale of hard goods
- Grid displays to help users quickly view data
- Customizable print, export and import options
- Support for Single, Six Pack and Case
- Modify PLU (Price Look Up) prices in either Polling or Inventory and the other package can easily be updated
- Track PLU stock levels and sales data
- View a complete PLU history including sales, transfers and adjusted items
- Create Purchase Orders
- Set low point re-order triggers
- Collect important report data quickly on item and purchase order status
- Includes Polling to and from Inventory integration



Download a DEMO from the web today!

Archive Agent



DenView500



Inventory



PC/Capture



V6 Polling



QuickBooks



V7 Polling &
Inventory



Interface

www.pcpoll.com

DenView500

Is an ingredient view of sales that bridges the gap between polling and a full-blown inventory system

General Features:

- ◆ Allows users to take previously collected Version 6 reports and calculate the usage on assembled items
- ◆ Allows business owners to manage their businesses at a fraction of the cost of a high-end inventory module
- ◆ Basic stock tracking also included
- ◆ Can be applied to many kinds of stores including restaurants and bars

PC/POLL SYSTEMS

3162 Cedar Crest Ridge
Dubuque, IA 52003

Phone: (563) 556-2323

Fax: (563) 556-0405

Email: sales2007@pcpoll.com

OVER 22 YEARS OF SERVICE
FOUNDED IN 1984

PC/POLL SYSTEMS

Point of Sale Communications Software



PC/POLL SYSTEMS Software for

SHARP



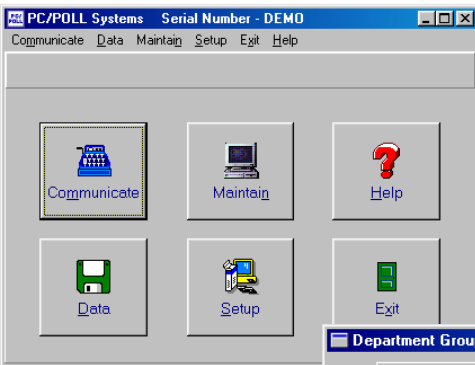
600 / 700

Other PC/POLL SYSTEMS Products

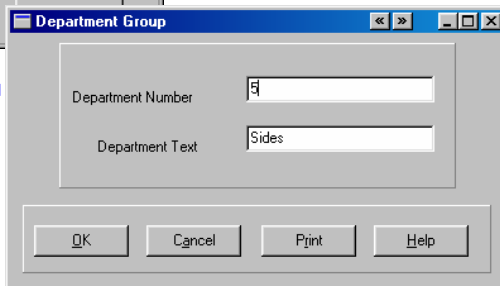
Archive Agent
DenView500
Inventory
PC/Capture
Polling
QuickBooks Interface

Features of Version 6 Polling

- Save and Send Programs
- Poll Reports
- Communicates direct connect or via modem
- Built in help files
- Users can setup the software to be completely manual to fully automatic using the prompted, script, schedule, and calendar
- Allows users to generate their own end of week and month reports using the consolidate feature
- Allows users to save programs back to their PC from the register, make changes at the PC and then send those changes to the register
- Allows users to take X and Z reports from their PC and save the data for later viewing and easy storage
- Several different report export formats to choose from for interfacing purposes
- Data can be exported from both the report and programming area in comma delimited text file format and select additional formats
- Users can save and edit their keyboard layouts and then send those changes to the register. In addition to the programming, they can also create an overlay with color buttons, color text or icons which can be printed out to place on the register
- Includes options for auto report exporting and printing
- Interfaces with Archive Agent, DenView500, PC/Capture, Version 6 Inventory and QuickBooks



Main Screen:
This is the main menu screen. From here users can enter the different areas of the program.



Department Group Detail Screen: This is the detail screen of the Department Group program. This lets you easily set-up and make changes to the Department Group program.

Version 6 Polling Reports

- Poll both Daily and Periodic Reports
- Poll both X and Z Reports
- Store reports on computer for later retrieval
- View and print reports with Zero Skip on or off
- Consolidate reports taken over a range of time
- Print reports
- Export reports in RTF, Excel, or HTML formats
- Automatically export and/or print any report
- Reports available include:
 - PLU
 - Department
 - Server
 - Transaction
 - T-Log
 - Plus Many More

PLU Num	Description	Quantity	Amount
1	Hot Dog	8,000	\$8.00
2	Coke	6,000	\$4.46
3	Ice Cream	7,000	\$6.63
4	Popcorn	4,000	\$1.80
7	Big Dog	7,000	\$9.75
8	Child Dog	6,000	\$8.00

Report:
This is an example of a PLU Report with the zero-skip feature on. Reports can be viewed on the computer and printed.

Version 6 Polling Programs

- Two ways to maintain programs: grids for programs with large number of records and easy to understand detailed forms
- Export programs into text files which can be read by Excel, Access and many other software packages
- Print listings of your programs
- Programs available include:
 - PLU/UPC
 - Department
 - Server
 - SRV
 - Keyboard
 - Plus many more

PC/Capture

PC/Capture displays captured data from the register in real-time. PC/Capture keeps track of the Sharp 600 and 700 report data and stores that information in a text file on the user's computer. Its features include:

- Easy to set-up and use
- View and print logs at your leisure
- Displays data as it collects
- Software automatically saves and names data files with easy to remember file names
- Automatically closes and starts a new file so program can run continuously
- Collect data by connecting directly to the register
- Gather data from single or multiple register systems
- A security program to monitor store sales and report data
- Easily search for key words in logs using the find first, find next and find all buttons

#0110 *X1*			
DEPARTMENT			
D01	2490	98.05%	\$11452.55
Fruit			0.31%
D02	70		\$36.61
Pears			0.60%
D03	140		\$70.00
Apples			0.09%
D04	100		\$10.10
Ber			0.86%
D05	90		\$99.99
Pumpkins			0.09%
D06	30		\$10.56
Seeds			\$11679.81
*DEPT TL	2920		100.00%
DEPT (-)	00		\$0.00

Display Screen:
This is an example of the PC/Capture display screen. This allows you to monitor your entire chain of registers from your office PC.

PC/Capture is a stand alone product. Polling is not required, but can be used in conjunction with PC/Capture.