

QuickBooks Interface Versions 2 & 3

- Completely revamped interface and routines
- Transfers data from all supported registers in Version 6 and Version 7 Polling with a few simple clicks
- Interfaces with QuickBooks 5, 6, 99, 2000 - 2007, Standard, Pro and Premier versions
- Help files detailing every screen
- Instructional Wizards to guide users through setup and daily maintenance
- Optional password protection for security
- Built-in log tracking for additional security and troubleshooting assistance
- Auto transfer routine for most configurations



Features of Version 6 & 7 Inventory

- Update inventory counters by retrieving report data from Polling or use Inventory as a stand alone module to track the sale of hard goods (Version 6 only)
- Grid displays to help users quickly view data
- Customizable print, export and import options
- Support for Single, Six Pack and Case
- Modify PLU (Price Look Up) prices in either Polling or Inventory and the other package can easily be updated
- Track PLU stock levels and sales data
- View a complete PLU history including sales, transfers and adjusted items
- Create Purchase Orders
- Set low point re-order triggers
- Collect important report data quickly on item and purchase order status
- Included Polling to and from Inventory integration



Download a DEMO from the web today!

Archive Agent



DenView500



Inventory



PC/Capture



V6 Polling



QuickBooks



V7 Polling &
Inventory



Interface

www.pcpoll.com

DenView500

Is an ingredient view of sales that bridges the gap between polling and a full-blown inventory system

General Features:

- ◆ Allows users to take previously collected Version 6 reports and calculate the usage on assembled items and includes basic stock keeping
- ◆ Allows business owners to manage their businesses at a fraction of the cost of a high-end inventory module
- ◆ Basic stock tracking also included
- ◆ Can be applied to many kinds of stores including restaurants and bars

PC/POLL SYSTEMS

3162 Cedar Crest Ridge
Dubuque, IA 52003-7875

Phone: (563) 556-2323

Fax: (563) 556-0405

Email: sales2007@pcpoll.com

OVER 22 YEARS OF SERVICE
FOUNDED IN 1984

PC/POLL SYSTEMS

Point of Sale Communications Software



PC/Capture for

SHARP®

Registers

600*

700*

750

770

3300/3301

*Reports Only



Other PC/POLL SYSTEMS Products

Archive Agent
DenView500
Inventory
Polling
QuickBooks Interface

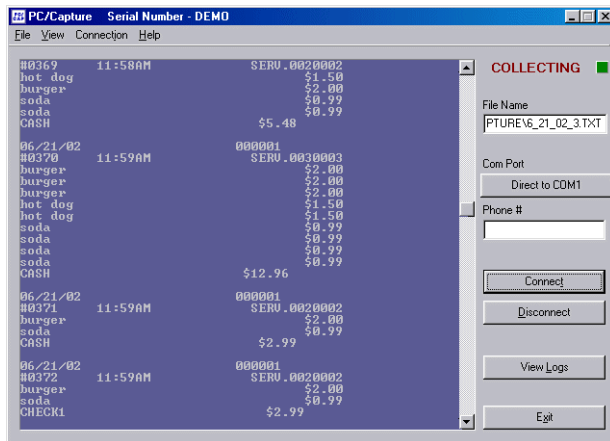
PC/Capture ~ Main Menu

PC/Capture is a journal and report collecting program. It collects report and journal data on the PC to turn your PC into a printer. It can be used as a security monitor for sales.

From the Main Menu users can:

- Setup the software quickly
- See the data as it is being collected
- The software will automatically name the data files with easy to remember names which include the current date
- If the data file becomes too large, the software automatically closes and starts a new file so the program can run continuously
- Collect data by connecting directly to the register or use the phone number field to connect via modem
- Gather data from single or multiple register systems
- Collect report data as well as journal information
- LAN & WAN communications available through Ether serial devices

(Note: The Sharp 600/700 register only supports report collection.)

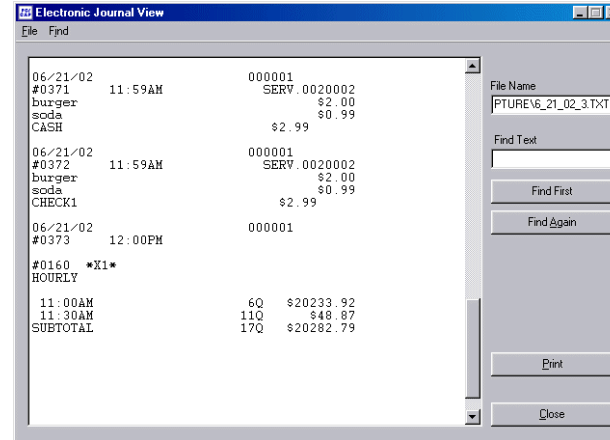


Display Screen:
This is an example of the PC/Capture main screen. This allows you to monitor your entire chain of registers from your office PC.

PC/Capture is a stand alone product. Polling is not required, but can be used in conjunction with PC/Capture.

PC/Capture ~ View Logs

PC/Capture keeps track of each and every sale at the register and stores that information in a text file on the computer.



Display Screen:
This is an example of the PC/Capture View screen. From here users can view, print and search collected data files.

From the View Logs area of the software users can:

- View and print logs at their leisure
- View both journal and report data
- Easily search for key words in logs using the find first, find next and find all buttons
- The find all button displays a quick jump search screen to allow users to rapidly view all instances of the entered Text To Find and navigate between them
- The quick jump screen also allows the user to print a listing of all the locations of the locations of the searched text
- PC/Capture can also be used as a security program to monitor store sales and report data
- A copy feature allows users to copy sections or the entire capture file
- Copy feature allows users to copy a small section or the entire capture file
- Keyboard hot keys to help users quickly copy, paste, and find text
- Detailed help files to aid in setup and usage of the software

Features of Version 6 & 7 Polling

- Save and Send Programs
- Poll Reports
- Communicates direct connect or via modem
- Sharp 600 / 700 communicates in Version 7 via TCP/IP
- Users can setup the software to be completely manual to fully automatic using the prompted, script, schedule, and calendar
- Allows users to generate their own end of week and month reports using the consolidate feature
- Allows users to save programs back to their PC from the register, make changes at the PC and then send those changes to the register
- Allows users to take X and Z reports from their PC and save the data for later viewing and easy storage
- Several different report export formats to choose from for interfacing purposes
- Data can be exported from both the report and programming area in comma delimited text file format and select additional formats
- Users can save and edit their keyboard layouts and then send those changes to the register. In addition to the programming, they can also create an overlay with color buttons, color text or icons which can be printed out to place on the register
- Includes options for auto report exporting and printing
- Interfaces with Archive Agent, DenView500, Inventory, and QuickBooks Interface

Features of Version 6 Archive Agent

- Archive Agent interfaces with all V6 & 7 registers
- Archives PC/POLL SYSTEMS Polling, DenView500, Inventory, PC/Capture and QuickBooks Interface V2 data. It is a complete backup for all Version 6 products
- Allows users to Archive, Restore, and Delete files from their polling directories.
- Corporate polling features include emailing, ftp, and Merge Operations.