

## FEATURES OF V7 INTERFACES

### ARCHIVE AGENT

- Archives PC/POLL SYSTEMS Polling, Inventory, and QuickBooks Interface V3 data for all V7 registers. It is a complete backup for all Version 7 products
- Allows users to Archive, Restore, and Delete files from their polling directories.
- Polling archive and restore options are divided into sections such as archiving just the setup files or just the report files.
- Data is compressed and stored in Zip files.
- Software displays messages for successful and unsuccessful actions.
- All options process quickly and are easy to execute.
- This program can be used to backup software data and to recover lost data.
- Corporate polling features include automatic emailing and FTP options and data file merge.
- FTP transferring routines are also included.

### DENVIEW500

- DenView500 is a new product that helps bridge the gap between Polling and a full-blown inventory system.
- DenView500 allows users to take previously collected Version 7 PLU reports and calculate the usage on assembled items.
- DenView500 works with all Version 7 cash registers. This program gives users an ingredient view of item sales data.
- DenView500 can be applied to many different types of stores including restaurants and bars.
- This software will allow the user to create a Master Items list of all their PLU items and link up to 5 component items to each of these Master items. The component items are then attached to Raw Purchasing Units. The reports generated reflect the total usage of the Raw Purchasing Units.
- Users can also track on hand values.

### QUICKBOOKS INTERFACE

- Completely revamped interface and routines
- Transfers data into QuickBooks from all supported registers in Version 7 Polling with a few simple clicks
- Interfaces with QuickBooks 5, 6, 99, 2000—2007 and Standard, Pro and Premier versions
- Optional password protection for security
- Auto transfer routine for most configurations
- All files are transferred in and out of QuickBooks in IIF format
- Use any or all of the following reports from Version 7 Polling to transfer data into QuickBooks:
  - ✓ PLU
  - ✓ Transaction/Financial
  - ✓ Time Keeping
  - ✓ Check Track / Customer
  - ✓ Department/Group
  - ✓ Customer

*(as available per register model)*

OVER 22 YEARS OF SERVICE  
FOUNDED IN 1984

### PC/POLL SYSTEMS

3162 Cedar Crest Ridge  
Dubuque, Iowa 52003

Phone: 563-556-2323

Fax: 563-556-0405

Email: sales2007@pcpoll.com

Web: www.pcpoll.com

## PC/POLL SYSTEMS

Point of Sale Communications Software

## VERSION 7 POLLING



**Casio TE-8500**



**Casio QT-6000**



**Casio TE-7000**

**Casio TE-4500 coming soon!**

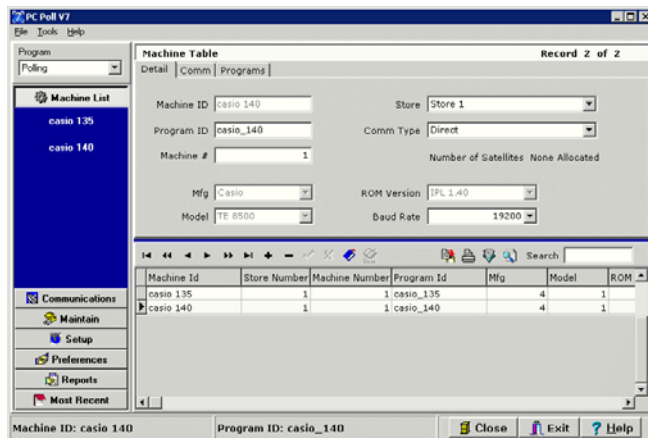
OTHER PC/POLL SYSTEMS PRODUCTS

**ARCHIVE AGENT  
V7 INVENTORY  
DENVIEW500  
QUICKBOOKS INTERFACE**

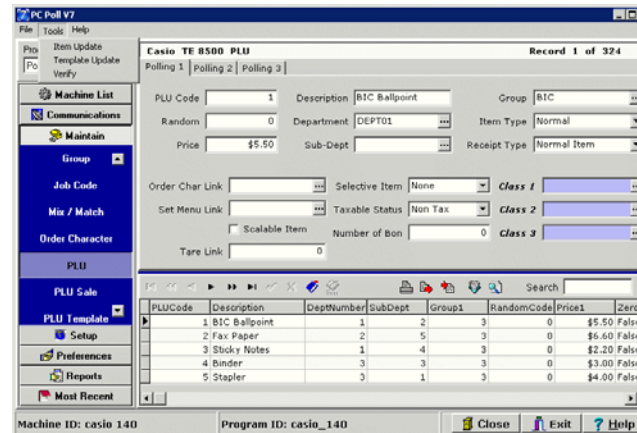
## FEATURES OF V7 POLLING

Introducing PC/POLL SYSTEMS' newest product: **Version 7**. The outlook bar style design makes navigating the software a snap. Users can easily jump between register Communications and Maintain with just a few mouse clicks. Version 7 Polling contains many enhanced features including:

- **Communications:** Checkbox style communication selections allow the user to quickly multi-select programs to save, to send or reports to poll
- **Maintain:** Mass creating, editing and deleting routines simplify register maintenance
- **Setup:** Create Scripts, Schedules and setup the Calendar for automatic polling options
- **Preferences:** User defined classes allow for quick sorting and searching options, along with optional software settings
- **Reports:** The All Polls grid stores previously taken reports for later printing, viewing, and exporting. Users can also easily generate graphs based upon report data
- **Most Recent:** Quickly revisit recently used maintenance area programs



The Machine List area of the software allows users to quickly add, delete and maintain their created machines.



Version 7 gives users complete control. They can save, send and maintain their register items with just a few simple clicks.

The PLU area also contains Mass Update, Mass Create and Verify options to expedite PLU maintenance.

## MAINTAIN MENU

Making changes at the cash register can be time consuming and difficult. With Version 7 Polling, changes are quick and easy. Users simply choose a machine to work with, select the Maintain bar and then choose which programs they want to edit. The software displays the register's data in both grid and detail formats for easy editing. Checkboxes and pop-up menus make editing existing and creating new items simple.

Version 7 also includes these advanced features:

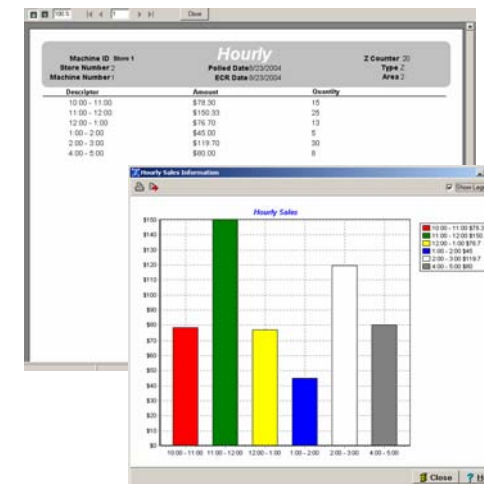
- **Mass Update** allows users to update and edit many items simultaneously.
- The **Mass Create** tool can rapidly generate hundreds of items through the use of PLU templates.
- The **PLU Sale** area offers the user flexibility to design their own product sales. Users can select the items and sale time periods. Prices can be changed manually or incremented/decremented by a set amount or a percentage.
- **Barcode** printing to Avery brand labels.
- **Classes** (user groups) for quick filtering, searching, sorting, updating, and even reporting.

## REPORTS MENU

The Reports section of Version 7 contains all polled register reports. Users can quickly view, print and export report data. The software also includes a graphing function which displays the selected report's data in graphical form. These graphs can be viewed, printed and even saved to a bitmap file to allow the user to insert the charts into a document or email.

Data can be brought into the Reports area either through polling the cash register(s) manually via the Communicate menu or by using the V7 Polling Calendar. The Calendar will automatically poll reports based upon previously schedule time periods.

**Consolidation Feature:** Version 7 supports report consolidation. This feature allows users to generate their own week-end, month-end and year-end reports. Simply select the report, date range and machine range, and the software will do the rest. Report totals may be viewed, printed, and even exported to a text or csv (Excel comma separated) file for later viewing.



Version 7 reports can be archived, viewed, printed and exported for future use.

Graphical representations are also available on select reports.