

VERSION 6.2 Polling

On December 5th PC/POLL SYSTEMS released Version 6.2 Polling. This update includes many new features and enhancements which are listed in detail below. To obtain this version simply download from PC/POLL's web site: www.pcpoll.com and contact sales2007@pcpoll.com for a demo release code. Current Version 6.1 Polling users should contact their dealer to see about purchasing the update.

(Note 1: All current Polling users can remain at Version 6.1 for no additional charge.

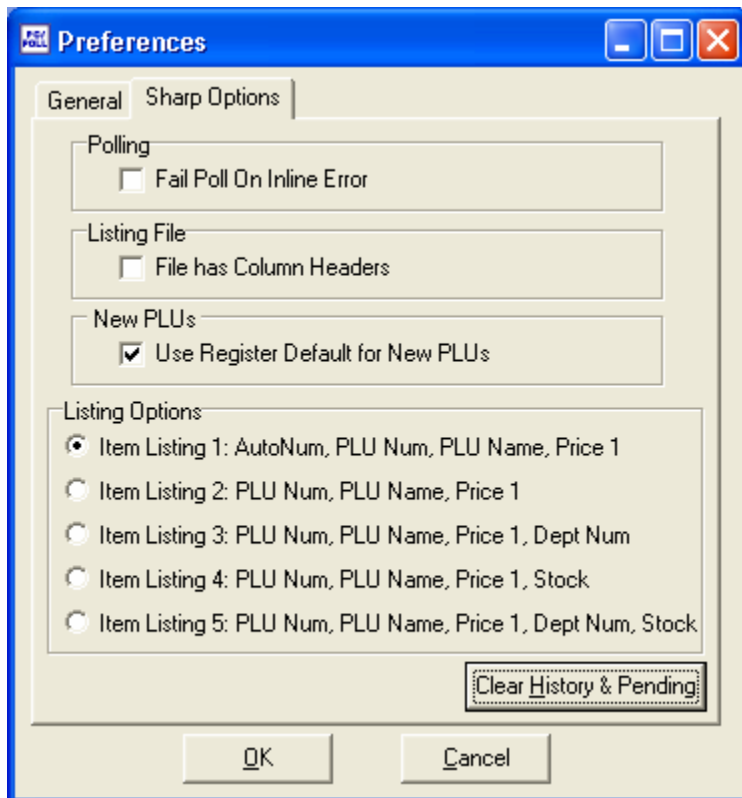
Note 2: Version 6.1 users will need to obtain a new release code to activate the Version 6.2 software.)

GENERAL ENHANCEMENTS.

Clear Log Files

An option has been added to the Preferences area of the software to allow users to clear both their History and Pending database files. These files store logging information and can very easily become large and thus increase the time needed to process scheduled events. To clear the History and Pending files simply:

1. Open Version 6.2 Polling
2. Click on the Setup button
3. Select Preferences
4. Choose the Options tab (i.e. CRS Options, Samsung Options, Sharp Options or TEC Options)
5. Click on the Clear History and Pending button



Additional Hot Keys

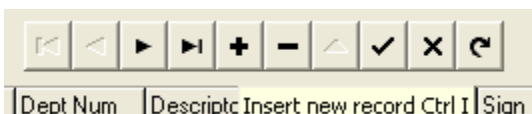
Throughout the software Hot Keys (or keyboard commands) have been added to the software to allow users the choice of using the keyboard or a mouse to execute software commands. Hot Keys are denoted by an underlined character. To access most Hot Keys users simply need to hold the Alt key and press the underlined character. For example, the following Hot Keys are available on the screen pictured below:

- Alt S: Selects the highlighted machine
- Alt E: Opens the Machine Maintenance area for the selected machine
- Alt P: Displays a printable machine listing for all created machines
- Alt H: Opens the Help Menu
- Alt U: Duplicates the currently selected machine
- Alt A: Adds a new machine
- Alt D: Deletes the selected machine
- Alt C: Cancels and closes the Machine List area



Extra Hot Keys were also added to the maintenance area record navigators to allow users to more quickly enter new and edit existing items. These commands are listed below and can be viewed by simply placing one's mouse over the desired button.

- Ctrl F: Places the cursor on the first record within the grid
- Ctrl P: Places the cursor on the previous record
- Ctrl N: Places the cursor on the next record
- Ctrl L: Places the cursor on the last record within the grid
- Ctrl I: Inserts a record into the grid
- Ctrl D: Deletes the selected record
- Ctrl E: Places the selected record in edit mode
- Ctrl S: Saves the current record changes to the database
- Ctrl C: Cancels the changes



PLU by Department (Group) Report

To all currently supported registers the programming staff has added a PLU by Department or PLU by Group report to the list of available reports within Version 6.2 Polling. This reporting option will allow users to take a PLU report and have the data sorted by Department (Group) number. This is not sent to the PC from the cash register, to generate this report Version 6.2 Polling takes a PLU report and sorts the data based upon previously saved Department (Group) data sorted within the software. Users must keep the PC's Department (Group) data up-to-date in order to have accurate reports.

(Note: Taking a Z report of the PLU by Department (Group) report will clear all PLU data from the cash register.)

			0	0	0	0.00
Group: Group: Baked Goods						
1	White Bread	1	0	0	3.00	\$3.56
2	Wheat Bread	1	0	0	3.00	\$3.98
6	French Bread	1	0	0	2.00	\$2.50
7	7 Grain Brea	1	0	0	4.00	\$9.75
8	Nut Muffins	1	0	0	2.00	\$2.75
13	Plain Bagels	1	0	0	2.00	\$1.39
14	Egg Bagels	1	0	0	3.00	\$2.78
15	Cinn Bagels	1	0	0	3.00	\$1.49
			0	0	22	28.20
Group: Group: Beverages						
3	Orange Juice	1	0	0	2.00	\$1.99
4	Apple Juice	1	0	0	1.00	\$.00
5	Cranberry Ju	1	0	0	2.00	\$2.24
9	Skim Milk	1	0	0	3.00	\$5.12
10	1% Milk	1	0	0	2.00	\$2.56
11	2% Milk	1	0	0	3.00	\$5.12
12	Whole Milk	1	0	0	3.00	\$5.12

Page 1 of 1

PLU MAINTENANCE AREA ENHANCEMENTS

The following changes have been made to the PLU maintenance area for all currently supported registers.

PLU Num	Price Name 1	Price 1	Department	Amt Entry Type	Repeat Round	Taxable1	Taxable2	Taxable3	Taxable4	Commission	Scale
1	Choc. Cookie	\$0.50	1	2	False	False	False	False	False	0	
2	Van. Cookie	\$0.50	1	2	False	False	False	False	False	0	
3	Ginger Cookie	\$0.50	1	2	False	False	False	False	False	0	
4	Choc. Chip Cookie	\$0.50	1	2	False	False	False	False	False	0	
5	Pepsi	\$1.09	2	2	False	False	False	False	False	0	
6	Sprite	\$1.09	2	2	False	False	False	False	False	0	
7	Coke	\$1.09	2	2	False	False	False	False	False	0	
8	Root Beer	\$1.09	2	2	False	False	False	False	False	0	
9	Veg. Sub	\$2.50	3	2	False	False	False	False	False	0	
10	Ham Sub	\$3.50	3	2	False	False	False	False	False	0	
11	Turkey Sub	\$3.50	3	2	False	False	False	False	False	0	
12	3 Meat Sub	\$4.00	3	2	False	False	False	False	False	0	
13	Chips	\$0.75	4	2	False	False	False	False	False	0	
14	Cole Slaw	\$0.75	4	2	False	False	False	False	False	0	
15	Potato Salad	\$1.50	4	2	False	False	False	False	False	0	

Search By:

PLU Num

Price Name 1

Value:

Search

PLU Num:

Price Name 1:

Verify: This button checks for incorrect PLU Fields

Fill Blanks: This button fills in blank PLU Fields with default values

Exporting Options

Within Version 6.2 Polling several exporting options have been added to the PLU area. By clicking on the Export button users will be able to overwrite an existing export file or append to the file. Users can also export changed records only.

Export

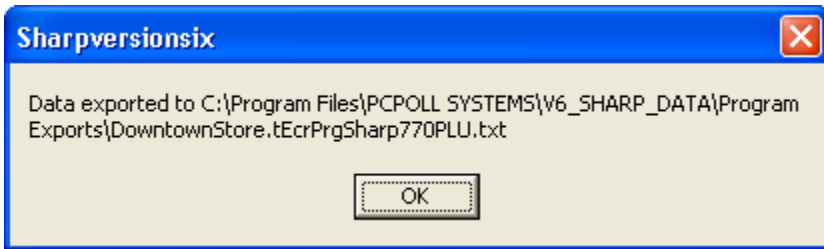
Overwrite existing file

Append to existing file

Export changes only

OK Cancel

The **Overwrite Existing File** option will automatically name and save the PLU file information to the user's Program Exports folder. The exports folder is a subfolder of the Version 6.2 Polling data directory. After the export is complete a message will appear displaying the name and location of the file.

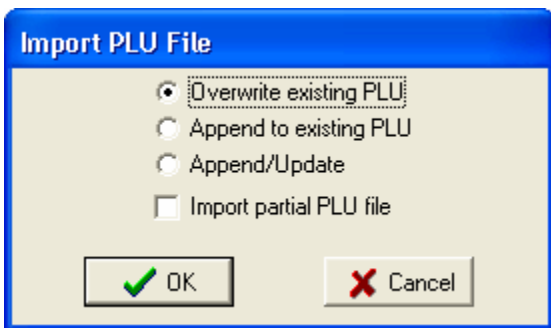


The **Append To Existing File** option will export all the PLU information to the same file as the overwrite option; however, instead of clearing the text file and replacing it with the current data from the PLU maintenance grid, the current PLU data will simply be appended to the end of the text file.

The **Export Changes Only** option can be used with either the Overwrite or Append option. This feature will allow users to export only changed PLU records. A record is considered changed if it has been modified or created since the last time the PLU file was sent to the cash register. After the PLU file is saved from the register to the PC all records are marked as changed due to the fact that a save updates all stored data.

Importing Options

Several additional importing options have also been added to Version 6.2 Polling. Users can overwrite, append or append/update. Users can also choose to import a partial PLU file.



The **Overwrite Existing PLU** option will delete all the currently displayed PLUs and replace them with the items stored within a previously exported text file. The file used for the import is the one created by the software from the export. The path and file name are defined by the software when the export file is created. (Note: Duplicates will not be imported; they will be skipped.)

The **Append to Existing PLU** option allows users to import a previously export text file and have all new items appended to the current PLU file. All existing PLUs will remain within the PLU area and will not be updated even if an updated record exists within the export file.

The **Append/Update** option will append new PLU records to the current file and update any existing PLU records with the data stored within the export file.

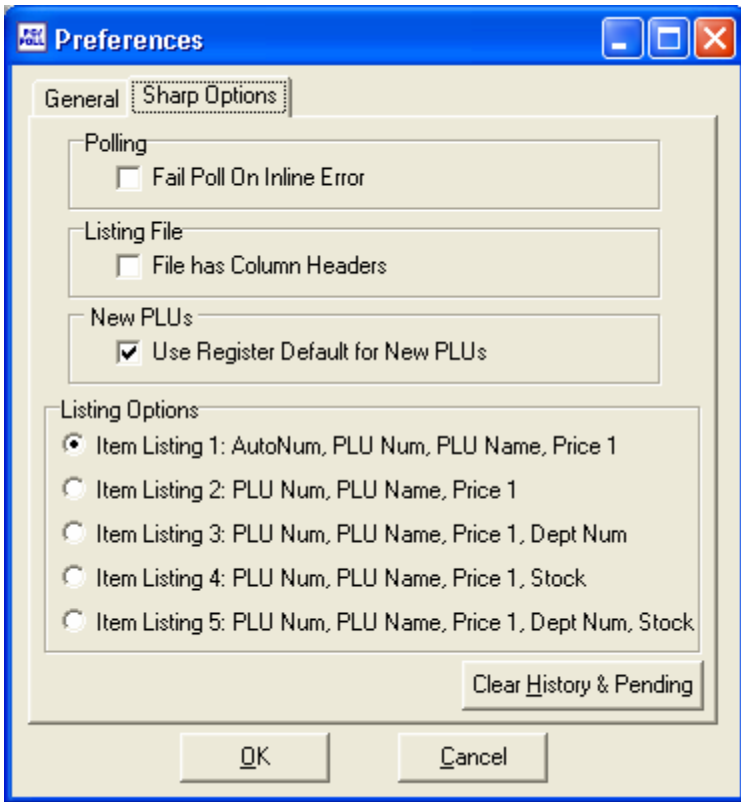
Users also have the option to **Import Partial PLU File**. With the other import options users must import all data fields. **The Import Partial** feature allows users to import only the fields they wish to update. For example, a user could import a file containing only the PLU item numbers and price change information. (Note: The PLU Item numbers are required for all partial imports.) For this import users are prompted to manually select the file to import. The file should be a comma delimited text file where the first line in the file contains a listing of all used field headers. The field headers can be placed in any order as long as they enclosed within quotation marks. Below is sample file.

```
"PLU Num","Price Name 1","Department"  
1,Choc. Cookie,1  
2,Van. Cookie,1  
3,Ginger Cookie,1  
4,Choc.Chip Cookie,1  
5,Pepsi,2  
6,Sprite,2  
7,Coke,2  
8,Root Beer,2  
9,Veg. Sub,3
```

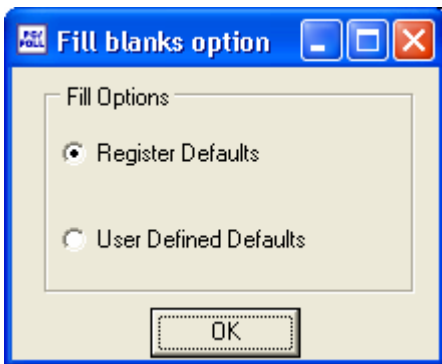
This option can be used with the **Overwrite, Append, or Append/Update** import options. If new items are imported with the Import Partial option the fields that are not assigned a value will be left blank.

Default Options

Two new PLU default options have been added to Version 6.2 Polling. The first option lets a user choose whether to have new PLUs automatically filled in with the register's default values or to have the fields left blank. The option can be set within the Preferences area of the software. When the Use Register Default For New PLUs is checked any newly created items will be populated with the register's default field values.



The second option is accessed via the Fill Blanks button found on the PLU maintenance grid. When the Fill Blanks button is clicked users are given the choice to fill empty data fields with the **Register Defaults** or with **User Defined Defaults**.



If the **User Defined** option is selected a PLU maintenance screen is displayed and users are allowed to enter in their desired default values. Then the PLU file is scanned for empty cells, and if any are found they are populated with the user's defined values. These values will need to be reset every time this option is used. If the **Register Defaults** option is selected the empty cells are filled with the register's default values.

User Defined Defaults

Add Number to Names

Name 1

Price 1

Associated Dept

Commission

Amt Entry Type

Price Shift

Price 2

Price 3

Price 4

Price 5

Name 2

Name 3

Name 4

Name 5

Output KP No. 1

Output KP No. 2

Output KP No. 3

Stock

Base Qty

Minimum Stock

Coupon PLU

Scale

Sign

Recipe Table 1

Recipe Table 2

Recipe Table 3

Recipe Table 4

Recipe Table 5

KP Text Price1

KP Text Price2

KP Text Price3

KP Text Price4

KP Text Price5

Menu Type

Set/Link Tbl

Mix Match Tbl

Tare Table Num

Priority Group

Hourly Group 1

Hourly Group 2

Hourly Group 3

Group 1

Group 2

Group 3

Condiment Tbl

Condiment Entry

Condiment Type

Cvm Ctrl Char

Taxable 1

Taxable 2

Taxable 3

Taxable 4

Allow Zero Price 1

Allow Zero Price 2

Allow Zero Price 3

Allow Zero Price 4

Allow Zero Price 5

CHIT Receipt

Modified Output

Repeat Round

By using the **Use Register Defaults For New PLUs** preference and the **User Defined Defaults** option in conjunction users can very quickly create and customize their PLU files.