

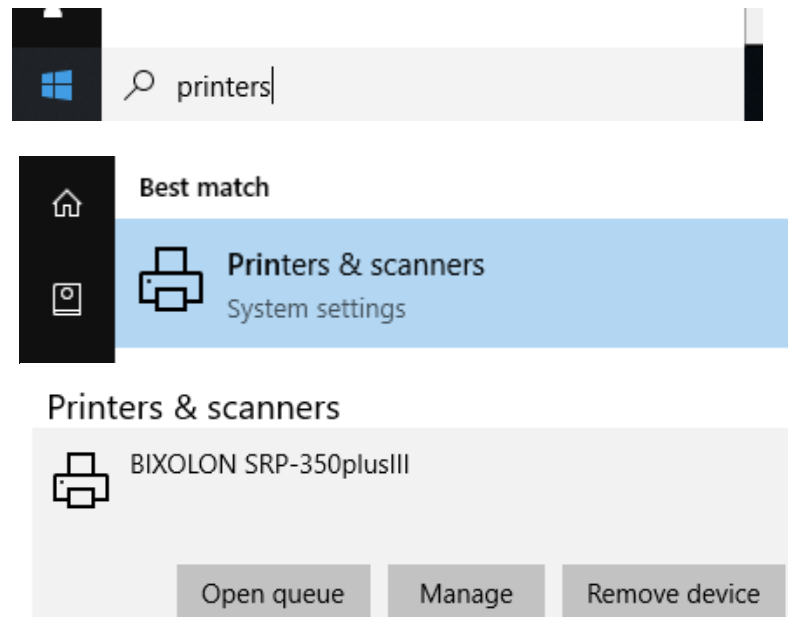
Bixolon SRP 350-plus III Remote Desktop/Terminal Server Setup

If you have questions about the installation of the printer please contact support at 563-556-3556.

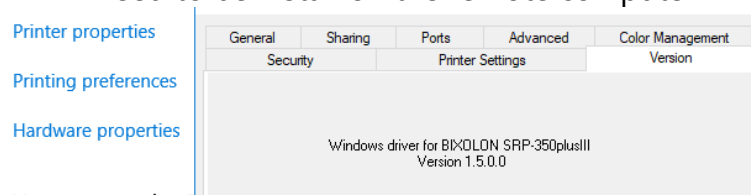
1. Follow the documentation to install the receipt printer on your local computer before starting this documentation. You will need to install the newest printer driver from Bixolon.

<http://www.bixolon.com> > **Support** > **Downloads** > **Driver downloads**> **SRP-350plusIII** > **Windows Driver**

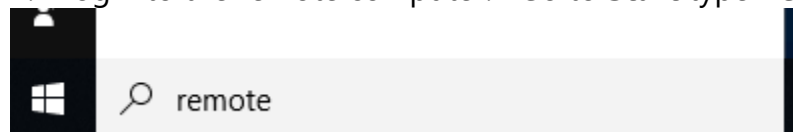
2. Check that the printer is installed on the local computer. In Windows go to **Start** and then type **Printers**



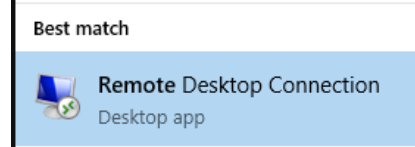
3. Click **Manage** > **Printer Properties** > **Version**. Write down the Windows driver Version. The same version of the driver will need to be install on the remote computer



4. Login to the remote computer. Go to **Start** type **Remote**

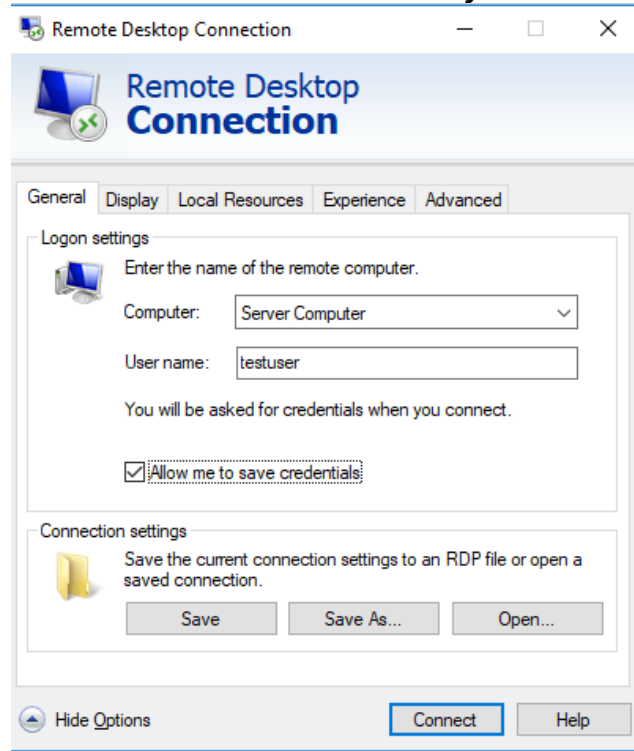


5. Pick **Remote Desktop Connection**

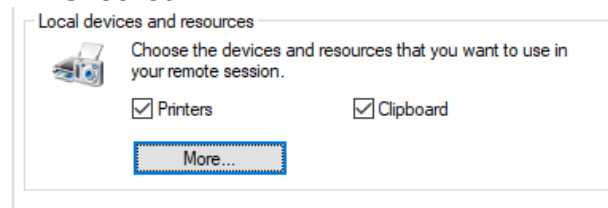


6. In the Remote Desktop Connection window enter the **Computer** and a **User name**

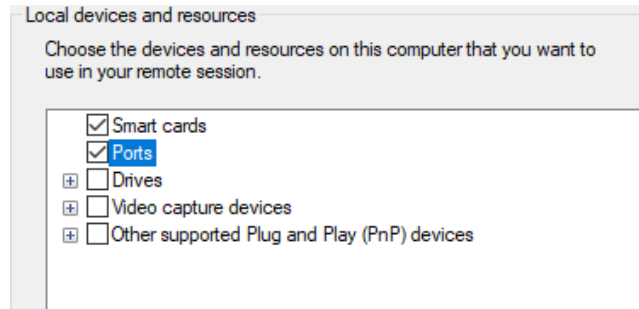
Note: *The remote computer may need to be set to allow remote connections or a Terminal Server may need to be setup by your IT person.*



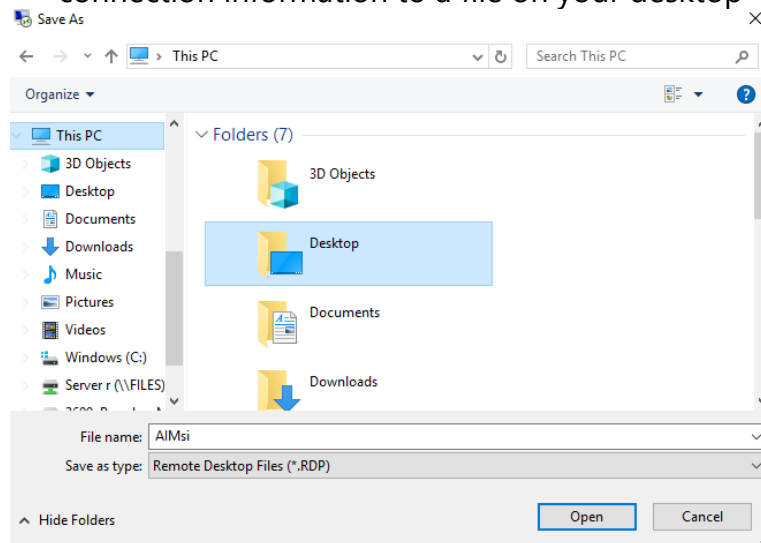
7. Go to the **Local Resources** Tab and make sure **Printers** is Checked



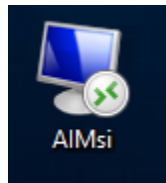
8. Click the **More...** button make sure **Ports** is checked



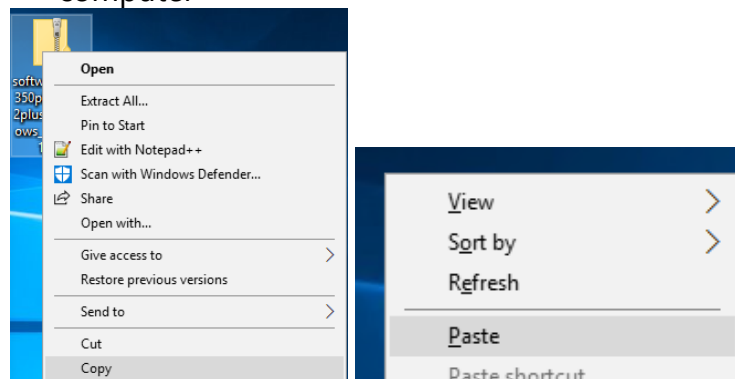
9. On the **General** Tab you can click **Save As..** to save the connection information to a file on your desktop

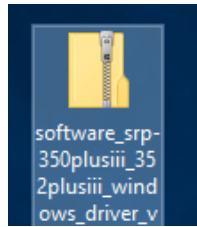


10. Double click the AIMsi Shortcut on your dekstop

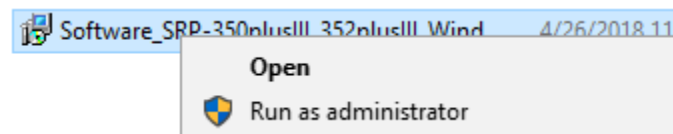
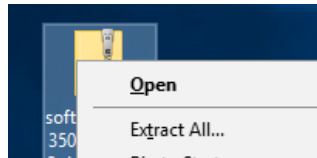


11. Copy the driver file from the local computer to the remote computer

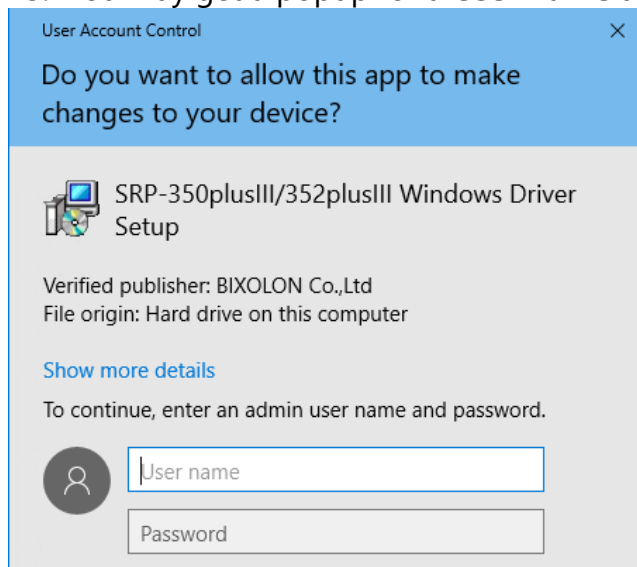




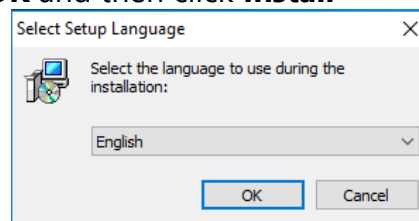
12. **Extract All** and then run the setup program as administrator

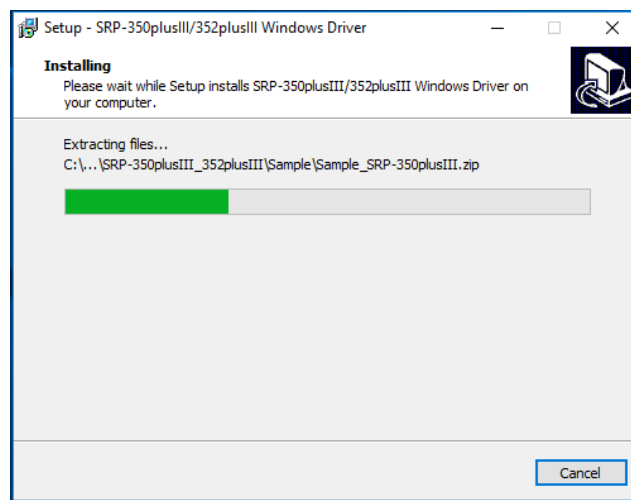
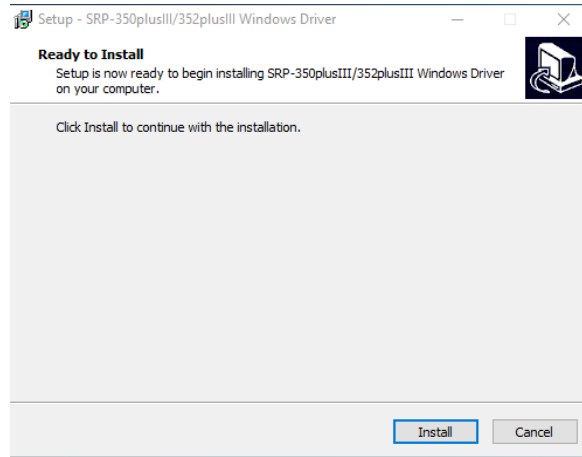


13. You may get a popup for a **User name** and **Password**

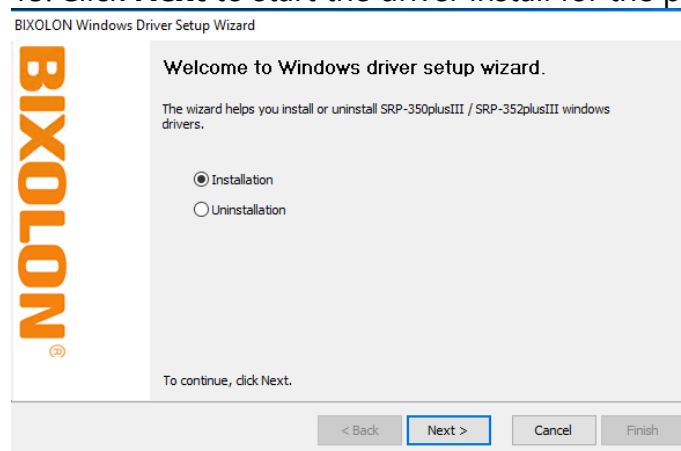


14. Click **OK** and then click **Install**

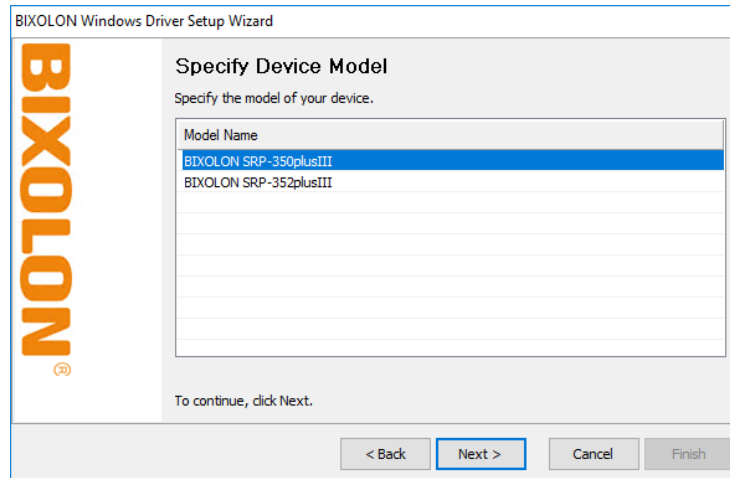




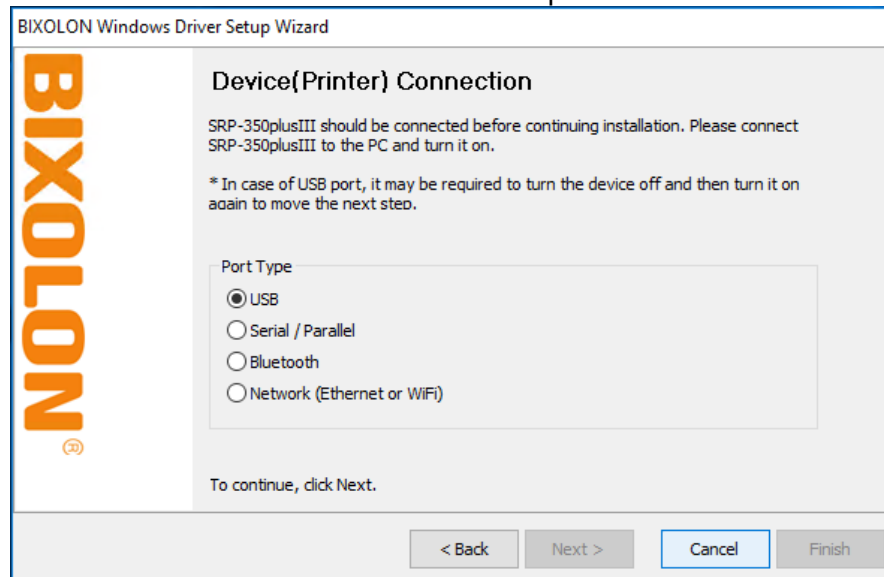
15. Click **Next** to start the driver install for the printer



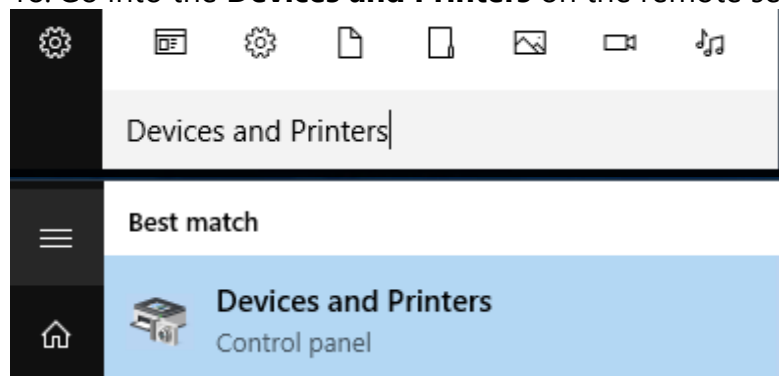
16. Select the **BIXOLON SRP-350plusIII** and then click **Next**



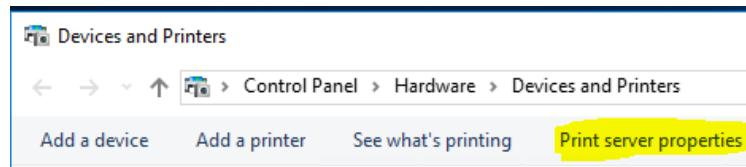
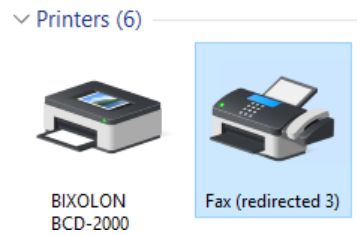
17. Click **Cancel** to exit the Driver Setup Wizard



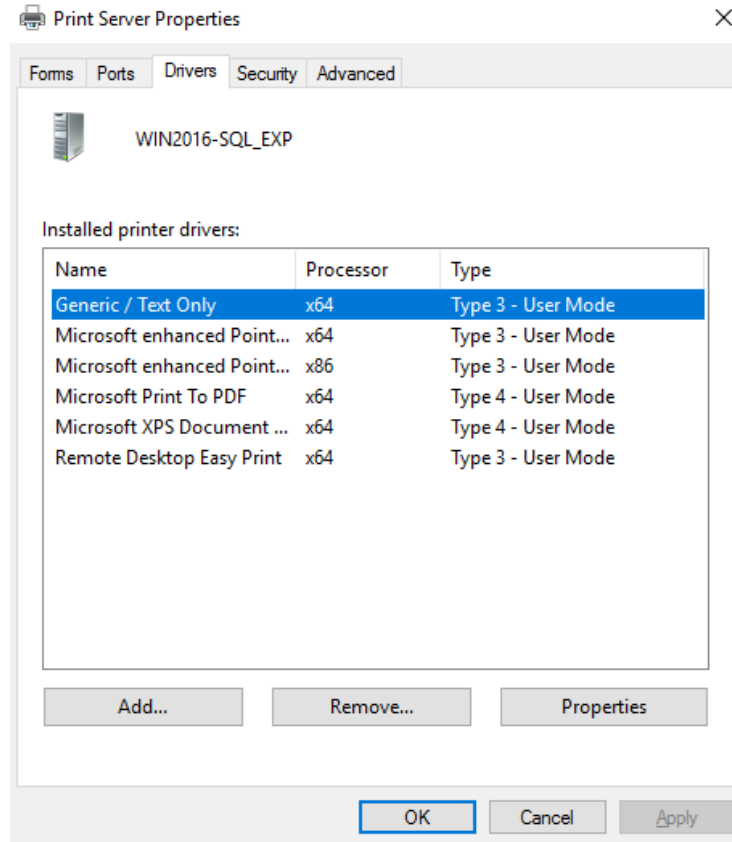
18. Go into the **Devices and Printers** on the remote server



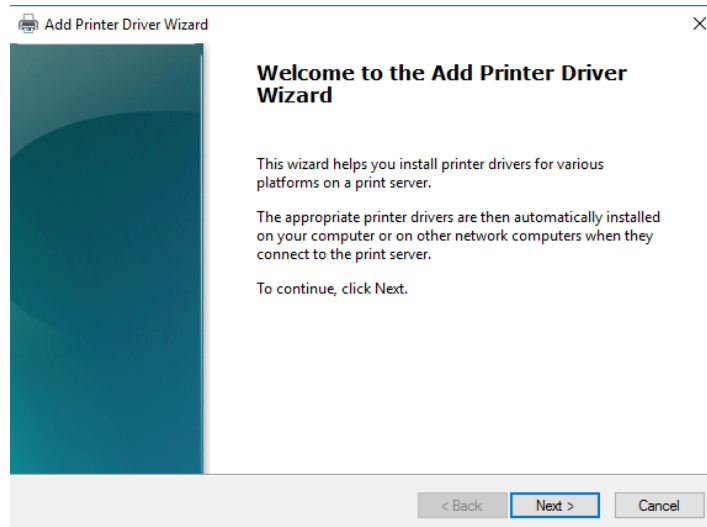
19. Click on any printer listed and then go to **Print server properties**



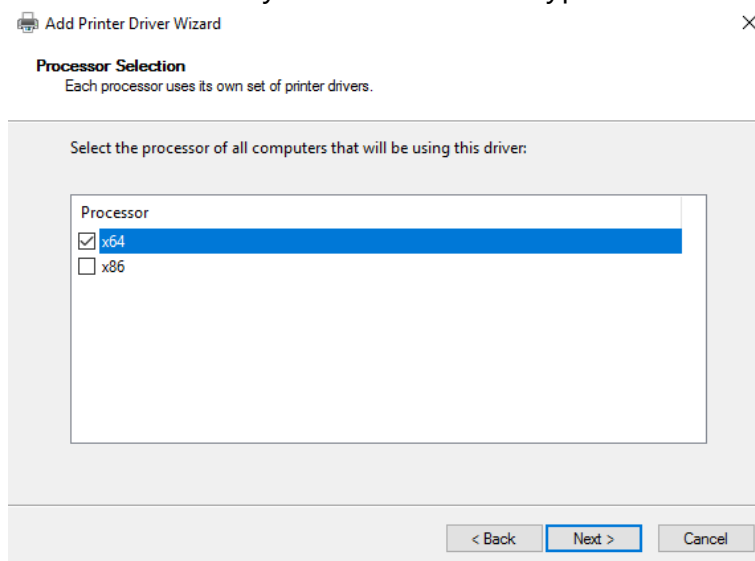
20. Goto the Drivers tab and click Add



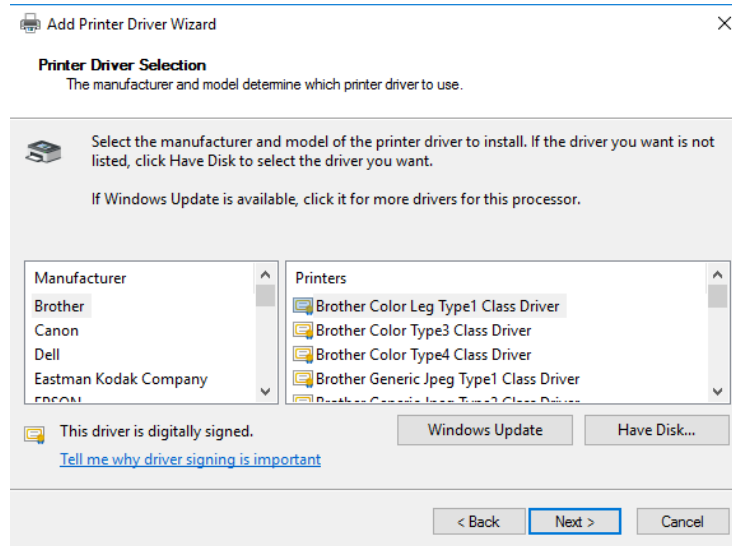
21. Click **Next** on the Add Printer Driver Wizard



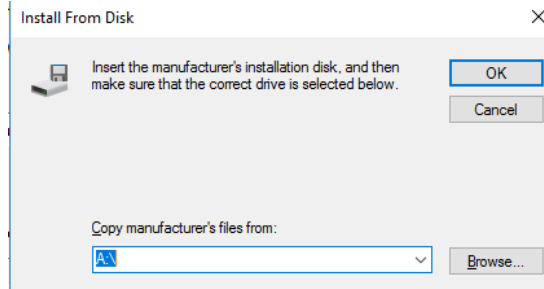
22. Click **Next** to select your OS Processor Type



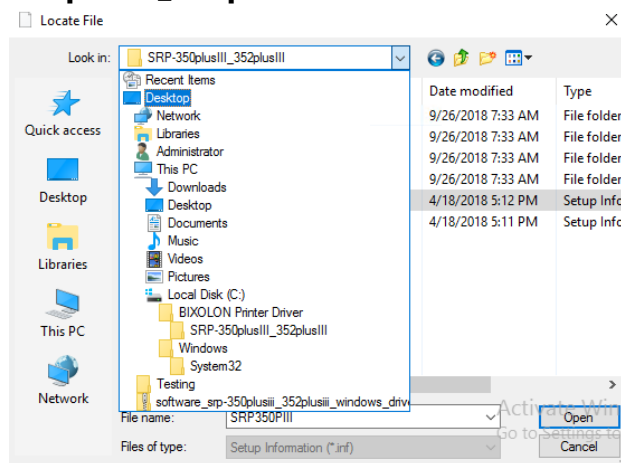
23. Click **Have Disk** to select from a file folder on your computer



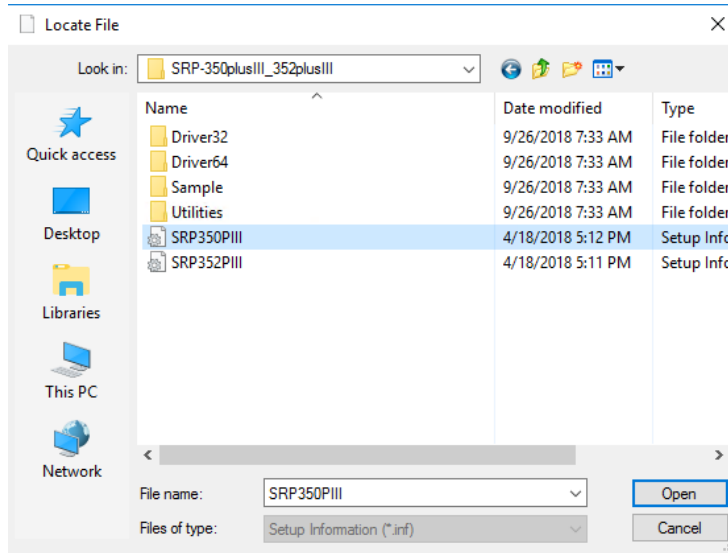
24. Click **Browse**



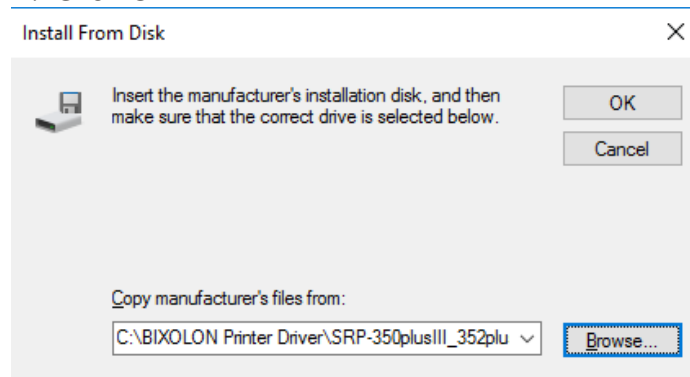
25. Find the **c:\BIXOLON printer Driver\SRP-350plusIII_352plusII** folder.



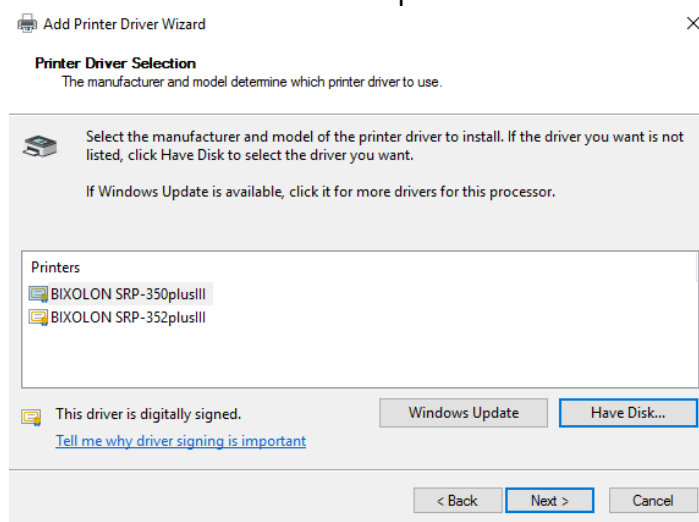
26. Select the **SRP350PIII** driver file and then click **Open**



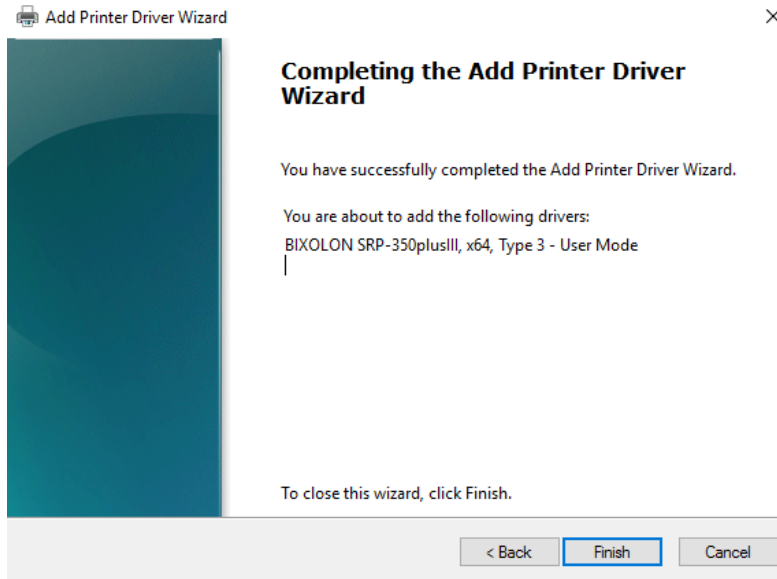
27. Click **OK**



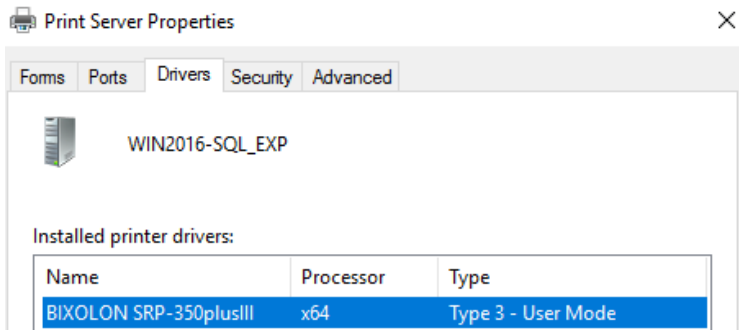
28. Click **Next** to install the print driver



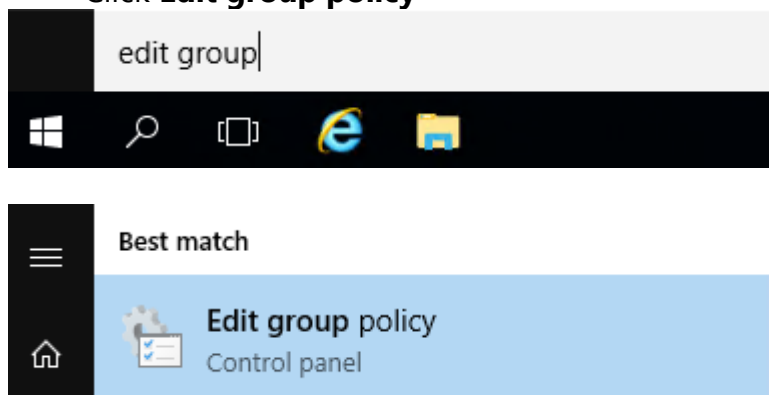
29. Click **Finish**



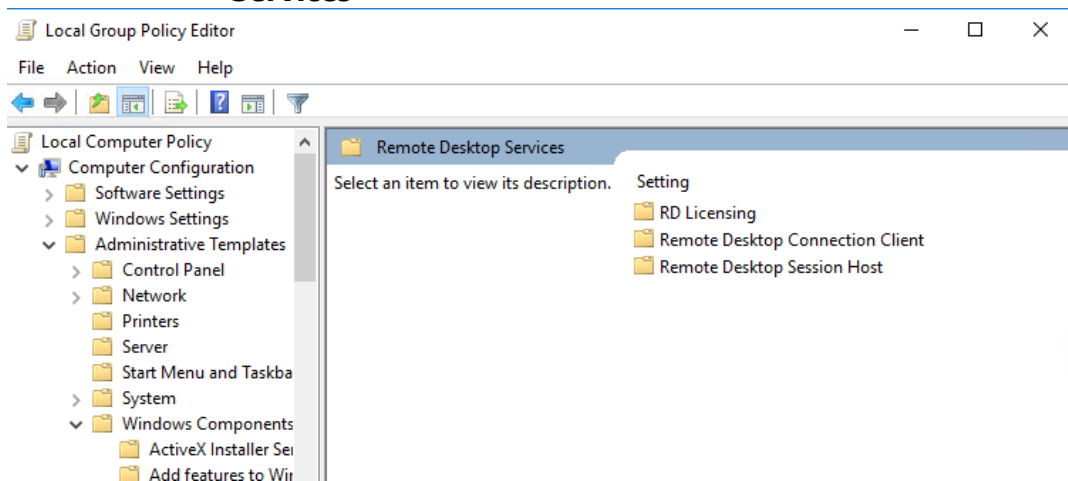
30. You should now see the print driver installed
Click **Close** and then exit out of Devices and Printers



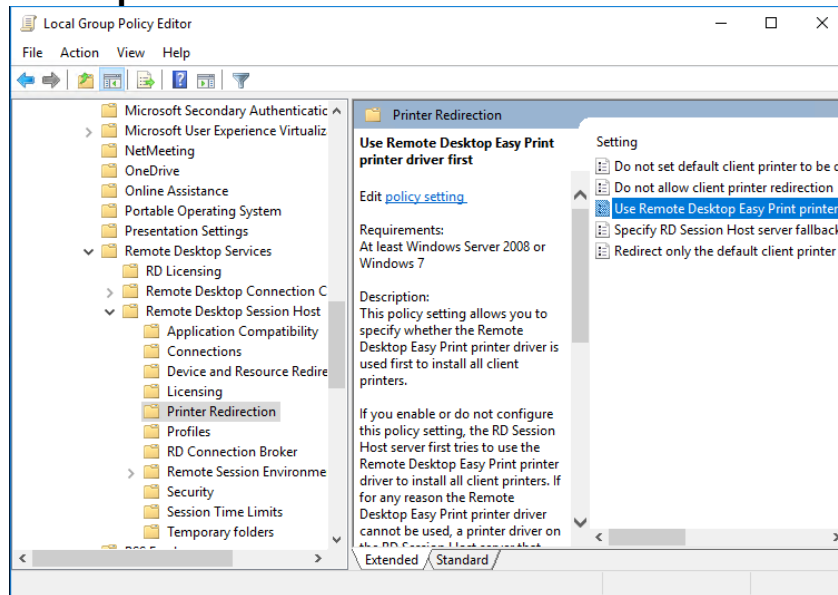
31. Open Group Policy under **Start** and then search for **edit group**
Click **Edit group policy**



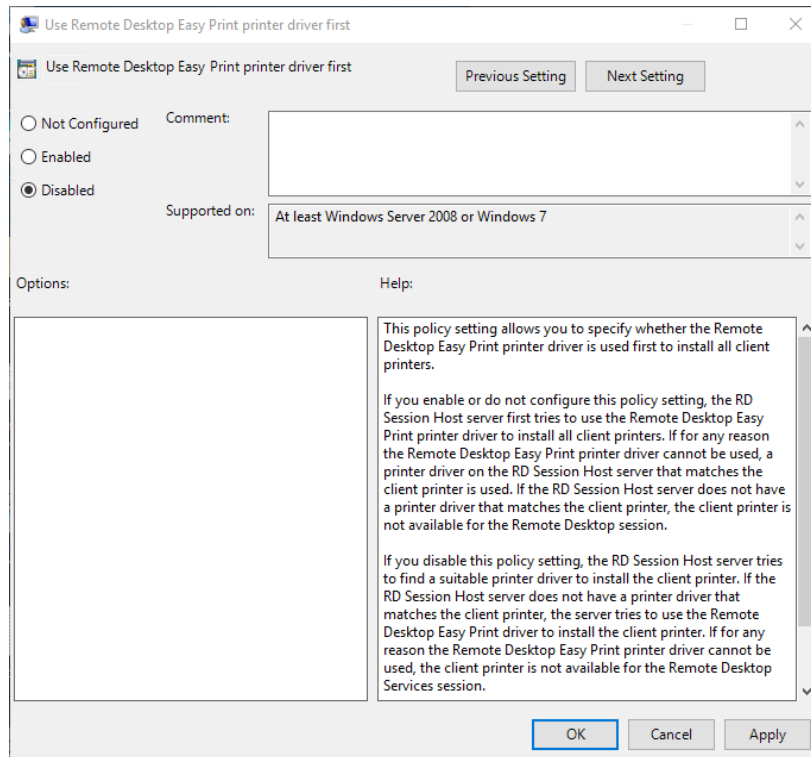
32. Under Computer Configuration find **Administrative Templates > Windows Components > Remote Desktop Services**



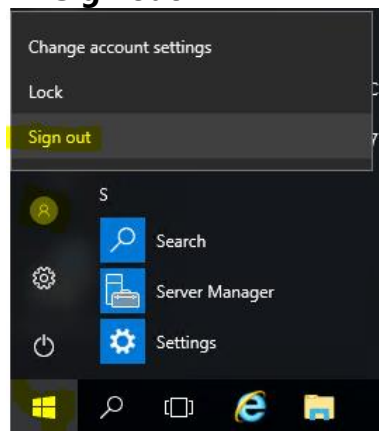
33. Click **Remote Desktop Session Host > Printer Redirection** and then double click **Use Remote Desktop Easy Print printer driver first**



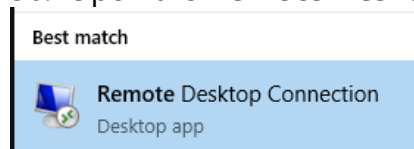
34. Select **Disabled** and then click **OK** and then exit



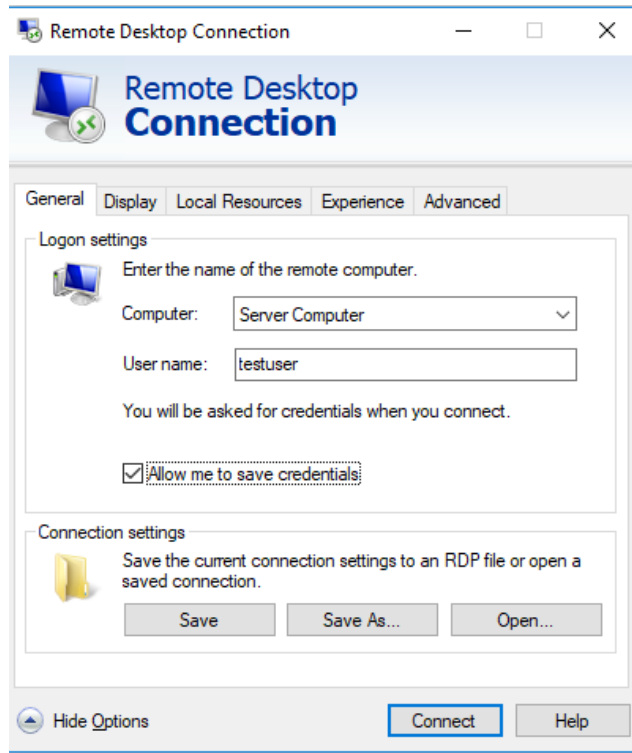
35. Logout of the Remote Desktop Session. **Start > User Icon > Sign out**



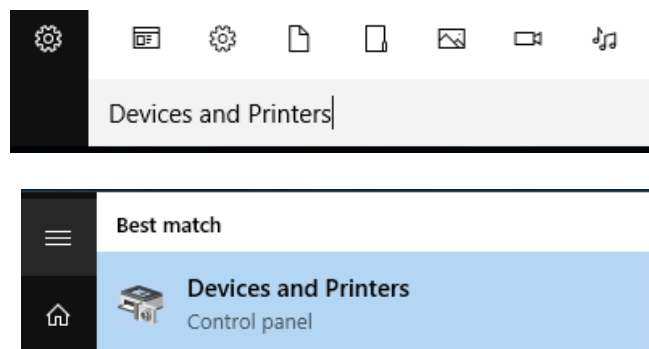
36. Open the **Remote Desktop Connection** again.



In the Remote Desktop Connection window enter the **Computer** and a **User name**.



37. Go to **Devices and Printers** again to make sure that the printer is listed.



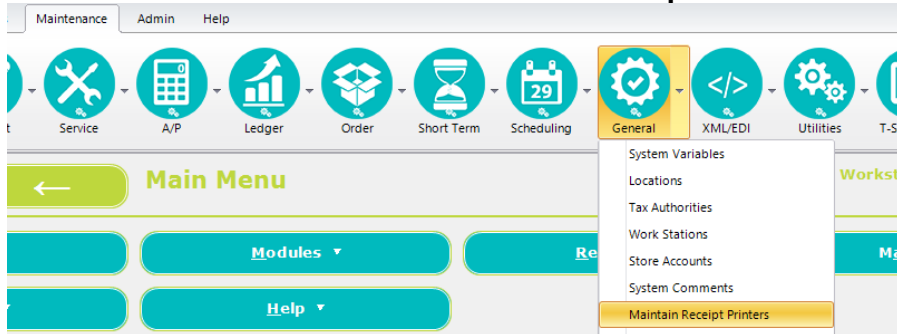
AIMsi v12 Setup

- 1) Open AIMsi.

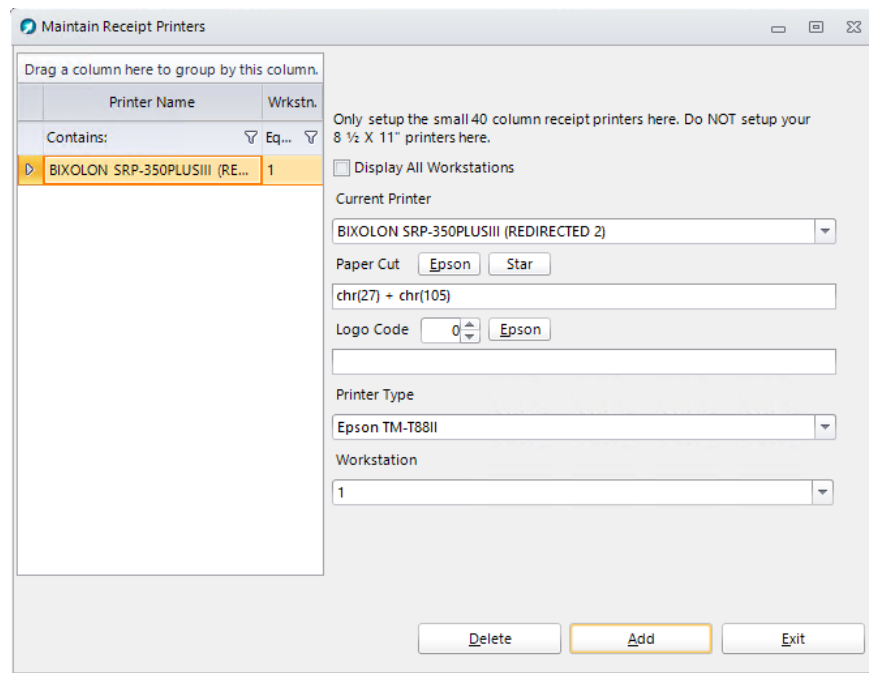


- 2) In AIMsi

Go to Maintenance > General > Maintain Receipt Printers



- 3) Click **Add** and then from the printer name drop down list select the Bixolon Receipt Printer.



Paper Cut: Click the Epson button for Paper Cut.

Logo Code: To use a Logo Code you must upload an image to the receipt printer. See the documentation on Uploading a Logo found here.

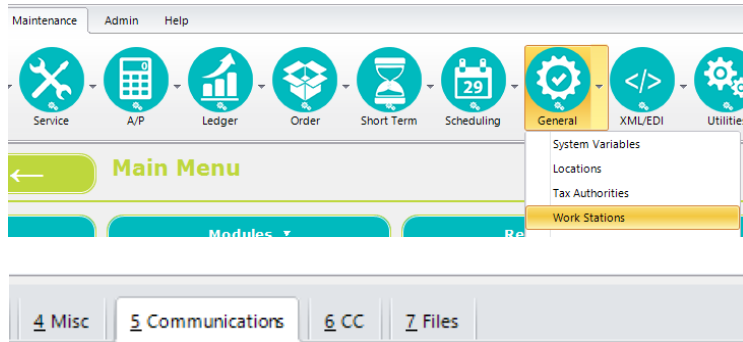
<https://www.technology4retailers.com/Images/document/Hardware/Bixolon%20LOGO%20Receipts%20for%20AIMsi.pdf>

Workstation: This field should auto fill with your workstation number.

Click **Save** when you are done adding the printer.

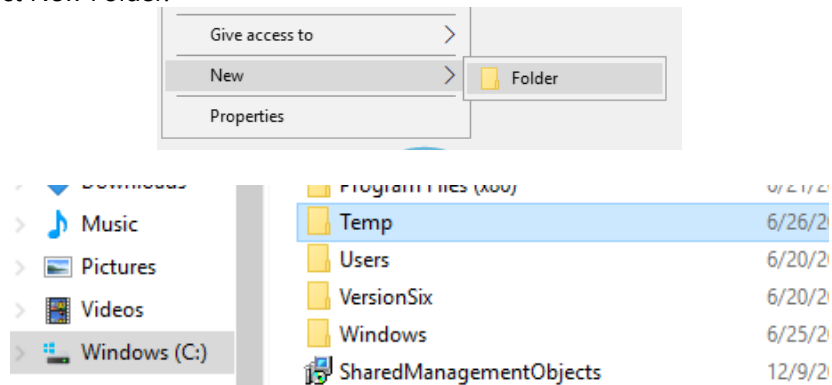
- 4) Setup the work station temp folder **Maintenance > General > Work Stations > Communications > Temp Folder**

The recommended location is the local drive c drive. Example **c:\temp**



Email Method	PDF Attachment
Mail Server	
Sender Email	
User Name	
Password	••••••••
Out. Mail Port	587
Temp Folder	c:\temp
	<input checked="" type="checkbox"/> Enable SSL
	<input type="checkbox"/> Internet Check

- 5) Verify the local temp folder is setup on the computer. If it is not found then right click and select New Folder.



- 6) You can test a receipt by going into **File > Reprint Last** or by creating a new sales invoice.

